



**NOTIFICATION TO ATTEND MEETING OF THE SOUTH EAST AREA COMMITTEE
TO BE HELD IN THE COUNCIL CHAMBER - CITY HALL
ON MONDAY 14 OCTOBER 2019 AT 2.30 PM**

AGENDA

MONDAY 14 OCTOBER 2019

PAGE

1	Presentation on Royal Hospital Donnybrook Housing	3 - 6
2	Presentation on City Parks Strategy	
3	Presentation on Herbert Park Tree Avenue Proposal	
4	Motions 14 October 2019	7 - 10
5	Minutes of the South East Area Committee meeting held on 9 September 2019	11 - 46
6	Environment & Transportation Department Matters	47 - 52
	i. Minutes of the Traffic Advisory Group (TAG) meeting held on 24 th September 2019.	
7	Culture, Recreation & Economic Services Department Matters	53 - 56
	i. Report on Upgrading of Main Playground in Herbert Park.	
	ii. Report on Upgrading of Main Playground in Harold's Cross Park.	
8	Planning & Property Development Matters	57 - 60
	i. Report on a further licence of the crèche facility at Pearse Memorial Park, Windmill Road, Crumlin, Dublin 12.	
9	South East Area Matters	61 - 72
	i. Report of the Director of Services.	
10	Questions 14 October 2019	73 - 86



RHD Housing was established in 1993 to provide sheltered housing for older adults and for adults with physical disabilities. We are a not-for-profit housing association run by a voluntary Board of Management. We are approved by the Department of Housing, Planning, Community and Local Government and operate under the Housing Agency's voluntary regulation code for approved housing bodies. We have a proven track record in the delivery of high-quality homes, property management and tenant support services.

Our Mission is to provide special purpose accommodation backed by personalised support services to enable our tenants live independently in a safe and secure environment as part of their local community. We look to innovations in housing design and technology to continuously improve the standard of our accommodation. We benchmark our support services against the sector to ensure best practice as part of the Housing Association Performance Management framework. Tenant surveys award a high satisfaction rating to the accommodation and support services we provide.

Our Housing Schemes comprise 68 accommodation units in three clusters in south city Dublin funded by Dublin City Council under the Capital Assistance Scheme:

- 29 bungalows and community facility at Cullenswood, Ranelagh
- 20 apartments at Bloomfield Park, Donnybrook
- 19 apartments and community facility at Beech Hill, Donnybrook

Our Growth Plan is to add a further 125 accommodation units within five years. We will continue to promote the need for specialised housing with support services for prospective tenants. We look to participate in Part V and redevelopment opportunities with Local Authorities and actively pursue partnership or collaboration opportunities to increase our housing stock. Ageing demographics mean that the demand for supported housing will grow. Each new tenant we house potentially reduces the local authority housing list or releases larger accommodation onto the market.

Our Strategy is to grow in clusters of 10 to 30 accommodation units. Clusters facilitate the provision of support services and generate a sense of community among our tenants. In assessing new cluster opportunities, we look at proximity to public transport, convenience stores, restaurants, hospitals and places of worship as well as security, comfort, tranquillity and, for disabled people, ease of access and mobility locally. These basic requirements allow tenants enjoy an independent lifestyle within their community.

Our Business Model involves close liaison with primary care and other health specialists to prevent unnecessary transfers to nursing homes or admissions to acute hospital beds and to facilitate prompt discharges from hospital. By enabling older adults to stay out of institutional care for longer, we can enhance their quality of life and help to alleviate the pressure on critical healthcare facilities.

Our Support Services for tenants include housing management, facilities management, emergency response and other supports as required:

- Liaising with Primary Care Team services for optimal access (e.g. day care, rehabilitation, respite, public health nurse, doctor, occupational therapy, physiotherapy)
- Resolving issues with practical resources and supports to overcome obstacles to independent living
- Coordinating support across State, community and private agencies
- Assisting applications for housing adaptations and home modifications



Our Technologies enhance the sense of safety and security for tenants living independently. We provide tenants with a smart technology package that includes 24 hour monitored panic alarm, passive movement detector, smoke alarm and monitored intruder alarm. Additional technologies are made available as required:

- Intelligent telecare sensors that indicate falls, flooding, gas leaks and temperature fluctuations
- Key safes for access by health professionals, carers and family
- Environmental controls (switch or voice activated) for turning on/off lights, opening/closing doors, windows and curtains, and operating household devices
- Automated door controls for wheelchair users
- Alternative controls for powered wheelchairs and seat-raising/posture devices
- Alternative communication devices (e.g. strobe lighting link to fire alarm)

What Makes Us Different? We have a long history of providing specialised supported housing for older adults and for adults with physical disabilities. We build in design features such as wider doors, adjustable height kitchen units and wet rooms to allow our tenants remain at home if mobility is impaired with the ageing process. We have the expertise and experience to plan, construct and deliver affordable housing for local authorities. We maintain and manage our housing schemes to a high standard. We operate a strong selection process that includes prior consent to Garda vetting. Our staff engage closely with tenants to ensure they have the services they need and promote regular social activities to enhance their quality of life.

Our Commitments are to ensure that our association is sustainable financially, is governed and managed in accordance with best practice and complies with all statutory and regulatory requirements as we house people in need and prioritise their health, safety and wellbeing.

Case Study - Beech Hill Project, Donnybrook

- Derelict site and funding provided by DCC
- Project managed by RHD Housing
- Design and planning awarded to Hamilton Young Architects
- Build contract awarded to Merrion Contracting Ltd.
- Sod turning ceremony October 2017
- Project completion December 2018
- 19 one-bed apartments and community centre
- Central lift access to upper floor
- Accessible units
- Landscaped common areas and parking facilities
- Occupation commenced December 2018
- Project cost €3.1 million



Contacting RHD Housing

Office Hours

General Manager: 087 957 9178

Address:

The Royal Hospital Donnybrook Voluntary Housing Association

Morehampton Road,

Donnybrook,

Dublin 4.

www.rhdhousing.ie



Motions

South East Area Committee
Meeting 14th October 2019

Motion 1 from Councillor Dermot Lacey

This committee requests the Manager to take action to resolve the issues outlined regarding the safety of access at the two pedestrian entrances to Herbert Park from Clyde Lane:

- The two entrances / exits to and from Herbert Park onto Clyde Lane and the danger to pedestrians exiting onto the Lane from the park.
- The total lack of signage with regard to the above.
- The fact that both exits are flush with the existing railings and so create a serious danger to adults and children exiting the park. There are no paths adjacent to either exits. The amount of vehicular traffic is increasing all the time in Clyde Lane and the issue is an accident waiting to happen.

Motion 2 from Councillor Dermot Lacey

This committee agrees, in order to improve traffic safety and vision and in accordance with the relevant sections of the Road Traffic (T&P) Regulations 1997 that double yellow lines be placed along the entire length of wall from the rear of 144 Merrion Road to 136 Merrion Road inclusive in lieu of the free parking that is there, or that disc parking be installed at the mid-point of this stretch – to provide for a maximum of 5 / 6 car spaces with double yellow lines on the balance thereby allowing clear space and vision for drivers turning both sets of corners.

Motion 3 from Councillors Dermot Lacey and Paddy McCartan

This committee requests the Lord Mayor and the Chief Executive to write to the government requesting that all appropriate steps be made to repatriate the bodies of James Joyce, his wife Nora (and others buried in the same grave) to Ireland as was the desire of James Joyce as expressed by his wife Nora and son at the time of his death, in time for the 100th anniversary of the publication of Ulysses in February 2022.

Motion 4 from Councillor Mary Freehill

Would the Manager please set out the legislative amendments needed to strengthen the Council's hand in dealing with noise? Our current powers are very weak and we are dependent on the opinion of the courts to be able to take action on any case. If it is difficult to give an opinion on this, perhaps we could set up a working group to look at how local authorities deal with this problem in other countries and we could put together recommendations which we could present to the Dáil.

Motion 5 from Councillor Deirdre Conroy

That this committee would arrange a working group between relevant officers and councillors with the NTA Deputy CEO and Roughan O'Donovan consulting engineers, in relation to the proposals that will alter roads and remove access to side roads in these communities, in order to fully represent residents and small businesses where parking is removed, trees are removed, residential access where roads are blocked and endangers school access where transport is increased on side roads. NTA has agreed to meet councillors.

Motion 6 from Councillor Deirdre Conroy

That this committee would request that the Dublin City Council Tree Strategy 2016 - 2020 initiates Tree Preservation Orders on historic roads. As it is only two months before we reach 2020, there is no inventory of trees in Dublin and NTA proposes to fell 3,000 trees on streets, not in parks.

Motion 7 from Councillor Tara Deacy

Illegal parking on the 24 hour cycle lane inbound on South Richmond Street and Camden Street Upper, Dublin 2 has become a chronic problem. It creates a very dangerous situation for people cycling on what has been identified as one of the busiest commuter cycling routes in the city.

The lack of enforcement of this illegal parking by both An Garda Síochána and Dublin Street Parking Services exacerbates the issue. This is not just an issue for people cycling but also for people walking this route as many of the vehicles park partially on the footpath creating a barrier for people walking, especially people with a disability.

As one of the busiest commuter cycling routes in the city I am seeking that this committee agree to provide segregation on this cycle lane to create a physical barrier preventing people from parking on the lane and keeping it safe for all road users.

Motion 8 from Councillors Mary Freehill and Anne Feeney

To reiterate a long and well established practise in South East Area, that all meetings arranged by officials with groups in the community, must include notice of the meeting to the sitting councillors in that area.

Motion 9 from Councillor Mannix Flynn

That this meeting of Dublin City Council South East Area Committee agree to fast track the demolition and regeneration of the blocks of flats at Glovers court. The tenants here can no longer continue to live in this deplorable condition and they're only hope is that Dublin City Council initiate this process immediately given the ongoing maintenance issues, antisocial behaviour and the chronic dilapidation of the fabric of the buildings.

Motion 10 from Councillor Claire Byrne

That this area committee calls on the Area Manager to install orca wands along the 24 hour inbound cycle lane along Richmond Street from Lennox Street (preferably outside Wall and Keith) to Grantham Street. There is a serious issue with cars and vans illegally parking along here in the cycle lane impacting on the safety of cyclists along this busy route.

Motion 11 from Councillor Claire Byrne

That this area committee calls on the Area Manager to install bike parking near Lansdowne Road station to facilitate dart commuters doing park and ride with their bikes. Recently signs have been erected saying that bikes locked on lampposts will be removed which means there is no bike parking available for cyclists close to the station.

Motion 12 from Councillor Pat Dunne

This Area Committee calls on our Public Domain Section to liaise with the relevant sections to ensure that all remaining weeds are removed from the footpaths, lanes and roadways particularly in the Dublin 12 area over the next few months. Additionally, we call for a full programme of manual weed removal for the 2020 growing season. Such a programme is necessary to replace the previous chemical spraying method.

Motion 13 from Councillor Pat Dunne

This area committee congratulates the Scoil Una Naofa Violin & Orchestra Project, Crumlin on gaining an award at the recent International Music Council, Music Rights Award 2019 Laureate in Paris. They, together with the Community Centre for Music and the Arts (CCMA) have provided opportunities for children and adults to develop the gift of music, arts and community appreciation and participation in both. This area committee resolves to support these projects in the future.

Motion 14 from Councillor Patrick Costello

This committee agrees to implement simple traffic changes to increase pedestrianisation of the area between Grafton Street and George's Street, as laid out in the attached image.

Motion 15 from Councillor Hazel Chu

Previously the area adjacent to Covanta's incinerator was provided to the company as parking during the build stage with the condition that it would be returned. The area is now curtailed off and affecting the local wildlife area. I propose that the council takes back this area in charge, combine it with the small wildlife patch next to it and form a much needed area of biodiversity in the city.



MINUTES OF THE SOUTH EAST AREA COMMITTEE MEETING

HELD ON MONDAY 9 SEPTEMBER 2019

- 1 **Presentation on Poddle Flood Alleviation Scheme, Part 10 update**
Order: Noted.
- 2 **Presentation on Planning Application Reference 3717/19**
Order: Noted. Councillors requested to have their objections to this planning application recorded and were advised that any observations or recommendations cannot be taken into account in the determination of the planning application unless formally submitted in accordance with the provisions of the Planning and Development Regulations.
- 3 **Presentation on UEFA Euro 2020**
Order: Noted.
- 4 **Presentation on Neighbourhood Transport Scheme**
Order: Noted.
- 5 **Motions 9 September 2019**

Motion 1 from Councillor Pat Dunne carried from July SEAC meeting

Given the size and diversity of the Dublin South East Area Committee we believe that a system of more localised meetings between councillors and local management for each of the 3 local electoral areas (LEAs) should be established.

Order: Agreed.

Motion 2 from Councillor Dermot Lacey

This committee requests the manager to initiate a specific cleaning programme in the vicinity of cycle lanes where they are in close proximity to locations where outdoor alcohol consumption may take place to reduce the impact of broken glass with consequent possibility of punctures and to procure specific support from the public and other suppliers of alcohol on the routes for this initiative.

Order: Agreed.

Motion 3 from Councillor Anne Feeney (taken with motions 6 and 16)

That this committee agrees that the speed limit of 50km/hr should be reduced to 30km/hr in Rathgar Village and on Rathgar Road and Terenure Road East. This change in speed limit would improve the safety for road users (pedestrians, cyclists and motorists) and recognise that Rathgar Village is central to the local community with small businesses whose viability depends on local pedestrian customers.

The change would also be consistent with Dublin City Council's aim of reducing traffic speeds generally; facilitating community development (as in the Rathgar Improvement Plan) and making Dublin a more age friendly city.

This positive change in speed limit would be entirely consistent with that in other urban villages in the City and should be implemented as soon as possible.

Order: Agreed.

Motion 4 from Councillor Anne Feeney

That this committee agrees that an appropriate tracking and feedback system is put in place to capture all monthly questions and motions; to categorise them as appropriate (i.e. traffic, roads, housing maintenance, by road, and other useful categorization) and facilitate a regular (e.g. quarterly update to all Councillors on the status of their query / question and other useful information i.e. contact name of council official dealing with each query. This system / process would allow both Councillors and officials deal with queries and represent constituents more effectively and efficiently and is already being used in other council areas.

Order: Report to Councillor.

Motion 5 from Councillor Dermot Lacey

This committee agrees to request the Manager to review the possibility and desirability of installing CCTV at the new playground at Sean Moore Park.

Order: Agreed.

Motion 6 from Councillor Deirdre Conroy (taken with motions 3 and 16)

That this committee agree to Speed Limit Change from 50km/hr to 30km/hr through Rathgar Village, on Rathgar Road and Terenure Road East. According to Rathgar Road Residents Association, "a reduction in the speed limit... is absolutely essential for the safety of the numerous pedestrians and cyclists who pass through Rathgar daily, the residents of Rathgar and patrons of the village businesses, and would consequently secure the viability of Rathgar as a safe and pleasant place to live and work."

Order: Agreed.

Motion 7 from Councillor Deirdre Conroy

That this committee agree to adding the Victorian villas and terrace on Winton Avenue, Rathgar to the Record of Protected Structures.



According to local resident, a derelict and damaged villa is in danger and should not be demolished, to do so would detrimentally impact the character and setting of the local area, which is in breach of architectural heritage guidelines.

Order: Agreed.

Motion 8 from Councillor Deirdre Conroy

That this Area Committee agree to more bicycle parking on Upper Rathmines Road near the retail parade, and provide a pedestrian crossing and lights.

Order: Agreed.

Motion 9 from Councillor Deirdre Conroy

To refer this committee to Palmerston Gardens parking scheme can be set up for resident parking permits and paid parking. As some of the residents consider that the free parking is causing over-parking on their road.

Order: Agreed.

Motion 10 from Councillor Mary Freehill

Over two years ago I got agreement at this committee that we ask Dublin Bus to provide seating as far as possible at bus stops. I specifically mentioned the bus stop on the east side of the road opposite Whitefriar Street Church. Sadly this bus stop is still without any seating and it must be a major problem especially for older people who attend Mass at this church. It is therefore agreed that we call a meeting with Dublin Bus to discuss their policy in this regard.

Order: Agreed.

Motion 11 from Councillor Mary Freehill

In the interest of ensuring proper maintenance and protection of the biodiversity of our canals, it is agreed that we urgently set up a meeting with Waterways Ireland. We need to discuss the implementation of the recommendations of the Scott Wilson Report. Furthermore we need to discuss with Waterways Ireland and the appropriate government department the provision of proper funding for canal maintenance. It is essential that DCC is given the facility to feed into the Waterways Ireland structure and ensure that both officials and elected representatives can be part of that democratic and devolved structure.

Order: Agreed.

Motion 12 from Councillor Pat Dunne

This area committee supports the completion of the Part 8 development ref. 1087/07 in Eamon Ceannt Park and specially the provision of 30 new car park spaces on Rutland Avenue. We call upon the relevant sections of Dublin City Council to now provide these car parking spaces as a matter of priority.

The provision of these car parking spaces has the support of the residents, park users and sporting clubs. The part 8 was approved in 2007 and while the new pavilion was completed, the car parking spaces are still awaited.

Order: Agreed.

Motion 13 from Councillor Chris Andrews

That the Manager write to the Gardaí in Pearse Street Station and request an increased presence in Pearse House and Markievicz House as the level of drug dealing and criminality is unacceptable in this community.

Order: Agreed.

Motion 14 from Councillor Danny Byrne

That this committee asks the Manager to meet a delegation of residents of Vavasour Square re yellow lines.

Order: Agreed.

Motion 15 from Councillor Tara Deacy

That this committee agrees to the installation of a zebra crossing or another form of traffic signal improvement at the junction of Ravensdale Park and Kimmage Road Lower.

With a high number of residents with visual impairments in the immediate vicinity and a large number of young families with young children, this crossing is dangerous and has been raised as a problem by many residents.

Order: Agreed.

Motion 16 from Councillor Tara Deacy (with motions 3 and 6)

That the speed limit in Rathgar Village, on Rathgar Road and on Terenure Road East be changed from 50km/hr to 30km/hr.

Order: Agreed.

Motion 17 from Councillor Tara Deacy

That the parking issues at the junction of Aughavanagh Road and Clogher Road, Crumlin be addressed, visibility is severely impeded by cars and vans parking on and around the corners of the junction and is almost impossible to see on-coming traffic until a vehicle is only metres away.

That planters or bollards be placed at the corners in order to dissuade people from parking there? (Please see pictures attached).

Order: Agreed.

Motion 18 from Councillor Tara Deacy

That DCC re instates the Household Collection prior to Halloween to avoid the availability of bonfire material, in turn reducing the number of illegal bonfires in many areas, in particular Rutland avenue.

Order: Moved by Cllr. Dermot Lacey. Report to Councillor.

Motion 19 from Councillor Tara Deacy

That the Committee agree to the installation of 'Children at Play Signage' in the Windmill Park area.

Order: Agreed.

Motion 20 from Councillors James Geoghegan, Claire Byrne, Hazel Chu and Patrick Costello

This South East Area Committee condemns in the strongest terms all forms of ethnic and racially motivated abuse.

Order: Moved for Cllrs. Hazel Chu and Patrick Costello by Cllr. James Geoghegan. Agreed.

Motion 21 from Councillor Hazel Chu

That this committee agrees to provide physical cycle lane protection for the cycle lane on the in-bound side of the road at the top of Camden Street.

Order: Agreed.

Motion 22 from Councillor Hazel Chu

This committee ask the community section to work with local residents groups to host car free days on a regular basis throughout the South East Area.

Order: Agreed.

Motion 23 from Councillor Patrick Costello

That this local area committee calls on Dublin street parking services to do more to enforce illegal parking in cycle ways and on footpath in the south east area.

Order: Agreed.

Motion 24 from Councillor James Geoghegan

This South East Area Committee requests that the installation of flexi bollards along certain segments of the cycle lane in the main Ranelagh Road through the village be examined to protect safe cycling be installed irrespective of whether the cycle lane is a 24-hr cycle lane or not.

Order: Agreed.

Motion 25 from Councillor James Geoghegan

This South East Area Committee requests that an independent external reviewer be appointed to investigate all options that could be considered by Ringsend Wastewater Treatment Plant or Irish Water to reduce the 18 annual releases from the storm water tank and the feasibility for an additional storm water tank to be built as a potential solution to preserve clean bathing waters for swimmers.

Order: Report to Councillor.

6 **Minutes of the South East Area Committee meeting held on 8 July 2019**

Order: Agreed.

7 **Environment & Transportation Department Matters**

- i. Minutes of the Traffic Advisory Group (TAG) meeting held on 28th August 2019.

Order: Noted.

8 **Planning & Property Development Department Matters**

- i. Report on the proposal to dispose of the Council's freehold interest in the property known as 22 Wicklow Street, Dublin 2.

Order: Agreed to recommend to City Council.

- ii. Report on the proposal to grant a temporary convenience letting of a site at Beggars Bush, Shelbourne Road to Eir.

Order: Referred back to the October South East Area Committee meeting.

9 **South East Area Matters**

- i. South East Area Updates.

Order: Noted.

- ii. Nomination of South East Area Councillors to committees.

Order: The South East Area Committee agreed the nomination of the following Councillors to the following committees:

Nomination of three Councillors to the Dodder Greenway Steering Committee:

Cllrs. Patrick Costello, James Geoghegan and Dermot Lacey.

Nomination of two Councillors to the Docklands Oversight Forum:

Cllrs. Claire Byrne and Kevin Donoghue.

- iii. Addendum report on the naming and numbering proposal for a development on a site at Charlemont Street / Tom Kelly Road, Dublin 2.

Order: Agreed.

- iv. Report on a naming and numbering proposal for a development on a site at Sandymount Castle Park, Dublin 4.

Order: Agreed.

- v. Report on a revision to a previously approved naming and numbering scheme for a development at Lansdowne Road, Dublin 4.

Order: Agreed.

- vi. Report on a proposal to name and number a development on a site formerly known as Waterpark House, to the rear of Treacy's Auto Centre, Poddle Park, Kimmage, Dublin 12.
Order: Agreed.

10 **Questions 9 September 2019**
Order: Noted.

Councillor Dermot Lacey
Chairperson
Monday 9 September 2019

Attendance:

Members:

Dermot Lacey (Chairperson)
Chris Andrews
Deirdre Conroy
Kevin Donoghue
Mannix Flynn

Members:

Anne Feeney
Danny Byrne
Patrick Costello
Pat Dunne
Mary Freehill

Members:

Paddy McCartan
Hazel Chu
Tara Deacy
James Geoghegan
Claire O'Connor

Officers

Mary Taylor
Paul McCann
Mark Ginnetty
Neil O'Donoghue
Gerard O'Connell
Paul Clegg

Brian Hanney
Robert Chester
Fiona O'Brien
Andrew Duff
Elaine Sullivan
Tony Flynn

John MacEilly
Declan Hayden
Leah Johnston
Gerald McEntagart
Don Daly

Non-Members

David Grant
(South Dublin Co. Council)

Apologies:

Claire Byrne

Q.1 Councillor Anne Feeney

To ask the Manager to investigate the water supply problem at Frankfort Court and arrange for the water main to be restored so that the public water supply and the hydrant provide an acceptable standard of service.

The public water main comes into this estate and terminates in a water hydrant. This produces a very low flow and is a matter of concern for residents, especially in the event of fire.

Reply:

As this issue is a matter for Irish Water it should be referred directly to Irish Water.

Please call the Lo-Call telephone number 1890 278 278 and identify yourself as an Elected Representative. You will be put through to the Local Representative Support Desk in Irish Water's Customer Contact Centre who will deal with you directly. Alternatively, there is a specific e-mail address at Irish Water for Councillors: LocalRepSupport@water.ie.

The Local Representative Support Desk at Irish Water operates from 9.00am – 5.30pm, Monday to Friday.

The following are the contact details for Irish Water:

Telephone: 1890 278 278 (Lo-Call)
Web: www.water.ie
Twitter: @IrishWater
Postal Address: Irish Water, PO Box 860, South City Delivery Office, Cork City.

Q.2 Councillor Anne Feeney

To ask the Manager to arrange for pruning of overhanging trees above the electricity box on Parkmore near the junction with Terenure Road West. The overhanging foliage which often is over the entire footpath is growing from a piece of 'no man's land' i.e. ownership of the land is unknown.

Reply:

This plant which is growing from a private garden is a fast growing climber commonly known as Russian Vine (*Fallopia aubertii*) has now been cut back.

Q.3 Councillor Anne Feeney

To ask the Manager to indicate what improved measures (to raise awareness and also to actively pursue enforcement) are being considered to deal with dog fouling on pavements in the South East area.

Reply:

Regular patrols are undertaken throughout the South East Area by Authorised Officers. The Officers in question distribute rolls of dog foul bags to dog walkers and maintain a visible presence in the areas.

Dog Wardens have been patrolling the South East Area accompanied by Public Domain staff.

Our Community Section organise and support local dog shows throughout the area. The Dog Warden Service attend these shows and give talks about responsible dog ownership.

Waste Management Services are in the process of preparing a citywide anti-dog fouling awareness campaign. The objective of the campaign is to raise awareness by using cinema advertising, social media and empowering the community by local activation.

Q.4 Councillor Dermot Lacey

To ask the Manager if he will have the leaves at the lower level of the tree on the left hand side of the road heading up Eglinton Road immediately after Eglinton Park removed as they cause a real block on the vision of cars exiting Eglinton Park.

Reply:

This tree is a large mature Horse Chestnut (*Aesculus hippocastanum*) which is considered to be in good condition based on a ground level assessment. Pruning of the lower branches will be added to our current tree works programme and undertaken over the coming weeks.

Q.5 Councillor Mannix Flynn

Can the Manager supply a full report and update on the 'fanzones' that are to be created regarding the UEFA 2020 Tournament in the Temple Bar Area and also in the wider area of the South East Area. This report to include all plans and event managements and also what infrastructure is to be put in place regarding health and safety and event management. One of the area's designated for such a 'fanzone' area is the Temple Bar Square area. This square at present is already a hazard to the public because of its dilapidated state. So what improvements are to be made when huge numbers of fans descend into this zone?

Reply:

A detailed presentation will be made at September South East Area Committee meeting to update Councillors on plans for EURO 2020 including Fan Zones.

Q.6 Councillor Mannix Flynn

Can the Manager issue an update report with regards the intended children's play area at Boyne Street flats?

Reply:

There are no plans at the moment to install a playground at the above location.

Q.7 Councillor Mannix Flynn

Can the Manager issue a report regarding how much revenue has been generated in the South East Area over the past three years for the erection of hoarding through Dublin City Council's permit scheme?

Reply:

The software used by Roadworks Control Unit to process hoarding licences is designed to cater for the Council's entire administrative area and cannot be formatted to select hoardings on an area basis. However, between January 2016 and December 2018 a total of 762 hoarding licences were issued by Dublin City Council and we would estimate the number of licences for the South East Area during that period to be 335 licences with a value of €3m.

Q.8 Councillor Mannix Flynn

Can the Manager have the pole on the north side of Wicklow Street (see photo attached) removed and relocated to a much safer area? Many people are complaining that this pole creates a nuisance and an obstacle because of the amount of bicycles that are being tied to it daily. There have been a number of serious falls and trips here by elderly and visually impaired persons.

Reply:

We are statutorily obliged to indicate with road markings and signage poles in areas of parking (temporary or permanent). The pole in question (on Exchequer Street) could only be

removed if the loading bay was re-located. Road markings without the appropriate signage would be unenforceable.

Q.9 Councillor Mannix Flynn

Can the Manager examine the process for the initiation of the regeneration of Glovers Court flat complex at York Street? This complex has serious structural problems and ongoing level of anti-social behaviour and many of its tenants are suffering from a myriad of illnesses as a result of the damp and mould and general dilapidation of the flat complex. There is ongoing issues in relation to the sewage and waste water and the roof and drainage in the building is a constant issue. This complex has over 40 flats, many of the tenants are elderly, while some are young families. They have suffered a long drawn out process and now realise that there is little hope of these present blocks being refurbished and maintained. The hope is that the future would offer a new build and a fit for purpose standard of accommodation for the generations to come.

Reply:

The Housing and Community Services Department has audited all its apartment complexes with regards current condition and development potential.

It will presently discuss its findings with the councillors for the South East Inner City and will be recommending that plans for the regeneration for Glovers Court are initiated.

Q.10 Councillor Mannix Flynn

Can the manager call on the Parks Dept. to prune the trees and the general weeds and shrubbery of 15 Kerlogue Road, Ringsend. An elderly couple live here and their light has been cut off by the overgrown tree in the garden. The side of their property has a small green area that is full of weeds and litter. The situation for this elderly couple is urgent as it is now a health and safety issue for them.

Reply:

Housing Maintenance have carried out an inspection of the area. They have spoken with the tenants and work to clear out the side area of the dwelling will be carried out in next three weeks. The tree will be pruned in October which is the season for this type of work. There are no health and safety issues involved for the tenants of this dwelling.

Q.11 Councillor Mannix Flynn

Can the Manager make contact with the developers of the hotel project on Ballsbridge / Lansdowne Road / Shelbourne Road area with regards the high level of noise and dust pollution coming from their building site? Also, the complete disregard for local residents and their concerns and the high level of unacceptable behaviour emanating from the site. The residents here are at their wits ends in relation to this ongoing issue. I have over a 1,000 pages of correspondence between the residents, the developer and the liaison officers on the site and indeed Dublin City Council.

The residents feel that they have been ignored and are given lame excuses for excessive noise, out of hours work and all the general disruption that is taking place in their lives as a result of this development. Dublin City Council have a statutory duty to ensure that this development in all its aspects is conducted in a responsible reasonable manner. In this instance this doesn't seem to be the case.

Reply:

The Planning Enforcement Section currently has an active planning enforcement file relating to alleged breaches of working hours at this site. There have also been recent complaints relating to noise and dust from this site that have been referred to our Environmental Health Section for investigation. Environmental Health Section have been requested to provide an update of the performance of the site in respect of noise and dust requirements.

Investigations by the Planning Enforcement Officer for the area have revealed that the last breach of working hours appeared to have happened over the May Bank Holiday weekend. Undertakings have been given on behalf of the developer committing to fully comply with their requirements relating to hours of work for the duration of the development.

Further complaints cited health and safety concerns and issues with parking clamps, these complaints have been referred to the HSA (Health & Safety Authority).

The site will continue to be monitored by the Planning Enforcement Officer for the area and consideration will be given to further enforcement action if required.

The Air Quality Monitoring and Noise Control Unit will investigate these matters, and in order to do so it will require the contact details of the residents making the complaints.

Q.12 Councillor Mannix Flynn

Can the Manager issue a full report with regards the street cleaning roster for Leinster Square, Rathmines and the surrounding areas? Many residents here have complained about the amount of dirt and litter that is being strewn about the place. Indeed, there is much correspondence between residents and litter management. Can the manager order a full clean of the area as soon as possible?

Reply:

Waste Management Services had Leinster Square cleaned on the 27th August 2019. Waste Management Services have residential areas like Leinster Square inspected on a weekly basis and cleaned when necessary to do so. There is no specific cleaning schedule for these residential streets because there are different cleaning requirements in different areas which cannot be met by applying a standard citywide cleaning schedule. We will certainly monitor the cleaning of the Leinster Square area to see if it requires some extra attention.

Q.13 Councillor Mannix Flynn

Given the rise in costs for building and development, particularly with regard the collapse of the plan for a cultural quarter at Parnell Square due to costs, can the manager bring a full report to the South East Area Committee on the implications of cost associated with a public plaza and traffic rearrangement at College Green?

Reply:

In relation to College Green, discussions are continuing with the National Transport Authority (NTA) and others with regard to Bus Connects and other related matters. The overall plans for College Green will be reviewed in the context of these discussions and taking account of the decision of An Bord Pleanála. The costs associated with the College Green proposals will be considered as part of this overall review and a report will issue to Councillors when the review has been completed.

Q.14 Councillor Mannix Flynn

Can the manager ascertain and issue a report as to how many convicted sex offenders have been accommodated / are being accommodated in the South East Area by the Homeless Executive and the service providers for such services.

Reply:

The Dublin Region Homeless Executive (DRHE) does not release the numbers of sex offenders housed in emergency accommodation or the location of such service providers across the Dublin region. When a client presents to homeless services, need is assessed on physical health, mental health, exiting the prison system, level of supports required, and ability to live independently. All available vacancies are considered and the most appropriate available allocated.

The Probation Service monitors sex offenders in the community as part of the Sex Offender Risk Assessment / Management (Soram) initiative which involves officials from the Garda, Probation Service, Tusla, local authorities and the Irish Prison Service.

Soram is a risk assessment and management system established in 2010 and supports enhanced levels of co-operation and co-ordination between key organisations involved in managing the risks posed to the community by convicted sex offenders and in safeguarding the welfare of children. Sex offenders have to register where they are living and as part of their monitoring role Gardaí will assess whether this is suitable accommodation.

Q.15 Councillor Mannix Flynn

Can the manager issue a report as to what services and funding have been provided by Dublin City Council (DCC) or any other body, with regards tackling the growing menace of intimidation for drug debts in the cities flat complexes. This report to include any application for funding and a full criteria of what programmes are being rolled out to deal with this. This crime affects many young people and many families in our housing estates and needs a strong response for DCC's estate management in collaboration with other bodies.

Reply:

Dublin City Council's anti-social behaviour strategy and policy / procedures contain the options available in tackling all complaints. This strategy is currently under review. In addition to our strategy, we also deal with the more serious cases such as a threat to life and gang related crime. We have moved many families for their own protection, these families will only be moved if they have a letter from the Gardaí confirming their threat to life.

Q.16 Councillor Dermot Lacey

To ask the Manager if permission has been given to anyone to remove the footpath along the side of Spafield Terrace, Ballsbridge, if any approaches have been made in relation to this and to confirm that no such permission would be given.

Reply:

Road Maintenance Services is not aware of any such approach. Road Maintenance Services' remit is the upkeep of roads and footpaths; it would not be in a position to sanction removal of a footpath.

Q.17 Councillor Deirdre Conroy

To ask the manager if Williams Park (a road) in Rathmines could be cleaned, and if only one side of the road could have parking space due to the limited access to Rathmines Wood.

Reply:

Waste Management Services had Williams Park cleaned on the 22nd August 2019.

Williams Park has parking on each side of the road as it is 7.20m wide as such fits the criteria for double side parking which needs to be 6.5m wide.

Bin Lorries are able to navigate this portion of Williams Park towards Rathmines Wood. There are double yellow lines outside Rathmines Wood apartments any vehicles parking on these double yellow lines are a matter for Dublin City Council Parking or the Gardaí.

There is no reason to make Ardee Road one way as the road is wide enough to accommodate two-way traffic. By changing this road to a one-way road would encourage vehicles to increase their speed.

Q.18 Councillor Deirdre Conroy

To ask the manager if the roads and footpaths on Derry Road can be repaired and improved. Details from an email are provided (details supplied).

Reply:

This will be examined and report issued directly to the councillor.

Q.19 Councillor Deirdre Conroy

To ask the manager that the trees on Larkfield Gardens and Larkfield Grove are pruned and the tops are reduced.

Reply:

The trees (*Tilia sps.*) at the above mentioned locations are growing on an area of public open space and are considered to be in good condition and not requiring any work.

Q.20 Councillor Deirdre Conroy

To ask the manager that a Holocaust Memorial sculpture or plaque would be erected in the Herzog Park on Bushy Park Road / Rathgar Road.

Reply:

As this is a proposal for a permanent memorial or plaque, this proposal should be referred to the Commemorative Naming Committee under the Dublin City Council Commemorative Naming Policy and if relevant to the Arts and Cultural Advisory Group in the case of a memorial sculpture.

Q.21 Councillor Deirdre Conroy

To ask the manager to provide public signage with contact details for residents to contact:

- (i) Litter Wardens
- (ii) Traffic Wardens

Due to many residents phoning and emailing and tweeting me about litter being dumped outside their homes and back lanes; and cars parking on cycle lanes or in dangerous spaces.

Reply:

It is the Council's policy to reduce the proliferation of signage throughout the City. To make a complaint regarding litter please contact the Dublin City Litter Hotline on (tel.: **1800 251 348** or email: customerservices@dublincity.ie).

Parking issues should be directed to parkingenforcement@dublincity.ie or directly to Dublin Street Parking Services (tel.: **6022 500** or email: info@dsps.ie)

Q.22 Councillor Deirdre Conroy

To ask the manager that the bollards on Mount Tallant Avenue are not removed.

Reply:

The Transport Advisory Group have no request on file requesting the removal of bollards at the junction of Mount Tallant Avenue and Derravaragh Road.

Q.23 Councillor Deirdre Conroy

To ask the manager to investigate flooding on the Kimmage Cross Roads area.

Reply:

The River Poddle, which passes through the Kimmage Cross Roads (KCR), has been the cause of flooding over many years with its effects extending from the city boundary to Harold's Cross at the Grand Canal. The last major event was in October 2011 but minor flooding occurs more frequently, most recently on 30th July 2019. On that date a sudden downpour occurred on the south side of the city with 17mm of rainfall falling in just 15 minutes in Terenure – an event with a 5% chance of occurring each year. As the sewer network is not designed for such extreme events, it caused widespread surface water ponding / road flooding and led to a number of properties flooding, mainly at basement level.

While the road gullies and public sewers are regularly maintained by the Surface Water and Drainage Sections of DCC (with high level gully maintenance provided at known flooding locations) the historical development of the drainage system as the city expanded has led to the capacity deficiencies and the flooding issues we now experience. In the past surface water surface water run-off was collected and piped to the nearest watercourse and was designed for immediate run-off and peak flows. That approach has changed in recent years to one known as SuDS or sustainable urban drainage. SuDS involves a more natural drainage approach with techniques such as permeable paving, infiltration to the ground and storage / slow release of run-off preferred.

Given the scale of these legacy issues, and as the river also passes through the South Dublin County Council area, a major flood alleviation project (estimated at c. €7m) looking holistically at the entire river's catchment is under way funded by the Office of Public Works and being led by SDCC. Further details on this project is available at the following link:

<http://www.sdublincoco.ie/Media/Item/39102>

Q.24 Councillor Anne Feeney

To ask the Manager to replace the street sign at the entrance to Grosvenor Park, Rathmines, as this sign is covered with graffiti and is very old. In addition the street sign for Grosvenor Park is only visible from the Rathmines side. Could an additional road sign be placed on the opposite side to this to ensure visibility for those coming from the Harold's Cross side?

Reply:

Arrangements will be made to replace these nameplates.

Q.25 Councillor Anne Feeney

To ask the Manager to consider making additional disabled parking spaces available in Rathgar village, possibly outside the AIB Bank, where there currently is one space. There is a growing number of people in the area with mobility challenges and one space in the village is insufficient.

Reply:

The request for additional disabled parking bays in Rathgar Village has been added to the agenda of the Transport Advisory Group for examination and report by the Area Engineer. Enquiry No. 7011085 refers. The Councillor will be informed of the recommendation in due course

Q.26 Councillor Anne Feeney

To ask the Manager to review speed and traffic management on Castlewood Park, Rathmines. While Castlewood Park is a side road, it is a residential road which experiences a good deal of traffic, driving at speed, between Castlewood Avenue and Church Avenue / Belgrave Road.

Reply:

Castlewood Park has on street parking which narrows the available carriageway width which results in the road being traffic calmed.

Vehicles should be travelling at slow speeds which are appropriate and be conscious of pedestrians in an urban environment. Under the Road Traffic Act 1961 as amended "52.— (1) A person shall not drive a vehicle in a public place without due care and attention".

A 24 hour speed survey was carried out between 07:00hrs on 19th August and 07:00hrs on 20th August, 2019. The resultant 85% percentile speed did not exceed the speed limit of 50kph, average was found to be 36 km/h and speed violations were less than 0.56%.

It is therefore not recommended to introduce further traffic calming measures, as they do not meet the warrant.

Q.27 Councillor Anne Feeney

To ask the Manager to consider extending free car parking spaces on Rutland Avenue from The Spar to the entrance to Eamonn Ceannt Park, to facilitate Lourdes Celtic Pavilion Clubhouse and to help eliminate illegal parking in Rutland Grove.

Reply:

The double yellow lines were introduced in the area as a result of illegal parking (car parking and blocking the corners on Rutland Avenue which caused visibility issues for vehicles entering and exiting. It is also illegal to park on a road of three lanes or less where there is a continuous white line.

In order to facilitate Lourdes Celtic Pavilion Clubhouse and to help eliminate illegal parking in Rutland Grove, the traffic area engineer recommends the implementation of a Pay and Display Scheme in the area, this would help to eliminate illegal parking, avoid commuter parking and create better arrangement of parking in the area.

Therefore, it is recommended that residents from Rutland Grove/Clogher Road apply for the introduction of the Pay and Display scheme in the area.

Dublin City Council can proceed with the preparation of a Pay and Display and Permit Parking Scheme on the residential roads and subsequent ballot of residents where there is a demonstrable and clear desire in favour of a scheme, i.e. 25% of households in favour of the request. This may take the form of a number of written requests or ideally a signed petition from the residents of the road. Following this, a request for a Parking Scheme will be referred to the Traffic Advisory Group for examination and report.

Q.28 Councillor Anne Feeney

To ask the Manager to put in place some surveillance of regular illegal dumping at the junction of Derry Road and Cashel Road and Derry Road and Kildare Road.

Reply:

The local Litter Warden for the area will monitor this area on a regular basis in order to try ascertain who is responsible for the illegal dumping. If evidence of illegal dumping is obtained by the Litter Warden, necessary enforcement action will be taken.

Q.29 Councillor Anne Feeney

To ask the Manager for more regular clearing up of litter on Cashel Road, Captains Road and Ravensdale.

Reply:

Waste Management Services had the above mentioned streets cleaned on the 26th August 2019. Waste Management Services have residential areas inspected on a weekly basis and cleaned when necessary to do so. There is no specific cleaning schedule for these residential streets because there are different cleaning requirements in different areas which cannot be met by applying a standard citywide cleaning schedule. We will certainly monitor the cleaning of this area to see if it requires some extra attention.

Q.30 Councillor Dermot Lacey

To ask the Manager for an update on the Gulistan Waste Depot site.

Reply:

A number of meetings have been held between the Planning Department and members of the South East Area Committee in regard to the Gulistan Depot site. At more recent meetings in 2019 which included members of the Rathmines Initiative, a revised draft Masterplan,

including retention of stone buildings within the site, was presented. The Rathmines Initiative have since responded and raised a number of questions in relation to the revised draft, including the potential need for a Retail Impact Assessment and a Health Services Plan for the Rathmines area. In view of the above and the implications for other similar sites, we are reviewing all of the depot lands and will bring a further report forward in due course.

Q.31 Councillor Pat Dunne

Can the Area Manager ask our Housing Development Section to report on the progress in developing Older Persons' Accommodation on the site at Fr. Lar Redmond Centre on Keeper Road Dublin 12?

Reply:

Respond Housing Association has completed a Feasibility Study & Review Report for the development of older persons' accommodation at the above location. As Respond are currently at pre-planning application stage, the Housing Department has asked for a Development Agreement to be prepared which will set out the programme for delivery of this scheme. The Development Agreement will include a "long stop" date for delivery. As this is a construction project, a Stage 1 Capital Assistance Scheme Application under the Department of Housing, Planning and Local Government (DHPLG's) Capital Works Management Framework will be submitted by Respond on conclusion of their pre-planning discussions. The Capital Works Management Framework approval process for Approved Housing Bodies (AHBs) has a 75 week timeline from date of stage 1 application.

Q.32 Councillor Pat Dunne

Can the Area Manager ask our Housing Allocation Section to give a timeframe for the completion of the Tuath Housing Older Persons' development at Raleigh Square, Dublin 12? When do they envisage the development to be completed and when will the nomination process begin.

Reply:

The development at Raleigh Square comprises of 28 one bedroom and 5 two bedroom units. Due to previously notified delays the substantial completion date moved from June, 2019. The delay in the original completion date was due to supply chain issues and unforeseen design elements in the scheme. It is now anticipated that the contractor will meet the new substantial completion date of October, 2019. However, there are two risk items which have the potential to slightly delay the project beyond this date which relate to damaged Eir ducts on site which could delay the commissioning of the lifts and a slight change to ESB specification which the contractor will need to address in order to commission boilers and fire alarms. Tuath are actively working with the contractor to minimise any delays beyond the October, 2019 completion date.

Q.33 Councillor Pat Dunne

Can the Area Manager ask our Housing Allocation Section when they expect to allocate the Part V units in the Mount Argus apartment development?

Reply:

The City Council are currently in the process of acquiring 13 units at Mount Argus. We expect to allocate these units in November / December 2019.

Q.34 Councillor Claire O'Connor

Can consideration be given to speed ramps or a zebra crossing on Upper Rathmines Road to facilitate pedestrian traffic to Kildare Place School?

Reply:

The Area Traffic Engineer has reported that following a site investigation, there is a demand for a pedestrian crossing on Rathmines Road Upper outside Kildare Place School. A traffic survey took place on the 28th November, 2018, from 8.30 a.m. to 9.00 a.m. A total of 122

pedestrians crossed the road in a period of 30 minutes. The above is the best location in order to achieve visibility for the crossing and for pedestrians to cross safely; also this location was the desire line where pedestrians crossed Rathmines Road Upper. A recommendation for a pedestrian crossing at this location will be submitted to the September, 2019 meeting of the Traffic Advisory Group. The recommendation will provide for consideration of the measure for inclusion on a future Works Programme subject to available funding and resources.

Q.35 Councillor Claire O'Connor

Can an outline be given of proposed plans to tackle speeding in South Hill in circumstances where a change of demographic means a large amount of children are out playing?

Reply:

South Hill has been previously been investigated with regard to introduction of speed ramps but the location did not meet the warrant for such measures.

However, South Hill is included in the fifth phase of the 30 Km/h Speed Limit introduction. Bye-laws to legislate for this change, the Special Speed Limit Bye-Laws, 2019 are currently out for public consultation until Sunday 22nd September, 2019. Submissions may be made in writing marked "Speed Limit Review" to the Senior Engineer, Transport Operations, Environment & Transportation Department, Dublin City Council, Civic Offices, Wood Quay, D08 RF3F, or via email to speedreview@dublincity.ie

Following the adoption, and sealing of the new Bye-laws, works will commence to erect the relevant signage in the new areas in 2020. This signage incorporates "Children Crossing" signage and is placed on all roads exiting off an arterial route.

Q.36 Councillor Claire O'Connor

Can this committee agree to write to Transdev to ask them to address the noise emanating from the Luas?

Reply:

This question has been forwarded to Transdev for comment and a reply will issue to the Councillor in due course.

Q.37 Councillor Claire O'Connor

The lamp post beside Base Pizza shop was recently painted; could adjacent ones also be considered?

Reply:

The Councillor was asked to clarify the location; street names of where the councillor is referring to and the pole numbers of the lights in question, are required. Upon receipt of this information, the matter will be examined and a reply issued to the Councillor.

Q.38 Councillor Claire O'Connor

Can confirmation be given of when below works (details supplied) will be carried out?

Reply:

The proposed pedestrian crossing at details supplied is on the Future Works Programme but unfortunately due to the lack of funding and resources these works will not currently proceed. It will be considered as soon as resources and funding become available.

Q.39 Councillor Chris Andrews

Can the Manager arrange to replace the front / back windows and doors of *details supplied with the new PVC windows and doors similar to the recently installed ones in this householder's neighbours' homes.

Reply:

The windows and doors in this dwelling were inspected by Housing Maintenance. The front door is brown PVC. The handle was replaced. This door is in good condition and not in need of replacement. The windows were deemed in need of replacement. The tenant was offered white PVC windows but refused as she wanted the door to be replaced also. An order for timber double-glazed windows has been placed with our Joinery Workshop. The tenant will be contacted when this order is reached.

Q.40 Councillor Chris Andrews

Can the Manager arrange to have the Grotto at Bremen Avenue tidied up and sprayed to remove the moss and dirt?

Reply:

Housing Maintenance Mobile Crew have cleaned the grotto at this location.

Q.41 Councillor Dermot Lacey

To ask the Manager if there is approval for a generator at the top of Ballsbridge Avenue, junction Merrion Road. This is used by the pubs to generate for outdoor lighting for matches and events.

Reply:

The Planning Enforcement Section will investigate this issue and respond directly to Cllr Lacey once the facts in the matter have been established on site.

Q.42 Councillor Dermot Lacey

To ask the Manager if something can be done to deal with overgrown hedging which is covering the no entry signs and to fix the damaged Ballsbridge Avenue road sign, at the same location.

Reply:

Arrangements have been made to cut back the hedging on Ballsbridge Avenue within the next two weeks. When this is done the no entry and road signs will be examined and rectified as required.

Q.43 Councillor Dermot Lacey

To ask the Manager if on the next issue of a license for outdoor tables for matches and events in front of the pubs at Merrion road by the junction of Ballsbridge Avenue, that an inspector would examine the location of outside tables (barrels) outside of the designated area.

Reply:

This issue will be investigated and enforcement will be carried out as required.

Q.44 Councillor Paddy McCartan

To ask the Manager to have the area at Greenore Court off Macken Street monitored as it has become a litter blackspot as a result of fly tipping.

Reply:

Litter Wardens will monitor the area over the coming weeks and will continue to monitor for illegal dumping.

Q.45 Councillor Paddy McCartan

To ask the Manager to deal with the following issue of overnight parking by camper vans in the car parks on Sandymount Strand. Could the height restriction barriers become operational to prevent camper vans overnighing?

Reply:

Dublin Street Parking Services will be asked to monitor this location and take enforcement action where necessary.

The barriers are left open to allow for the drainage vehicles to access their containers on the seafront and also for Waste Management to service the bottle bank at this location.

Q.46 Councillor Paddy McCartan

To ask the manager to deal with the following issue from a constituent.

He writes:

Could a Yield sign could be put on the pedestrian island on the south side of the roundabout on Sydney Parade Avenue / Strand Road?

Drivers approaching the roundabout on Strand Road seem to think that they do not need to 'give way' to cars already on the roundabout coming from Sydney Parade Avenue.

This has resulted in numerous rows between drivers over recent years. This, as you can imagine, is very unpleasant for local residents.

One other factor which I think would help is a roundabout having a kerb which would prevent motorists driving over the roundabout which often happens.

Reply:

There are Yield Signs on all three approaches to the roundabout of Sydney Parade / Strand Road which impose a requirement on all approaching traffic to yield. There are also transverse yield line markings and hollow triangular yield markings on all approaches to the roundabout. These road markings are included on all three arms.

The provision of a Yield Sign requires that drivers have sufficient visibility of conflicting traffic to judge that it is safe to continue to join or cross that traffic without stopping.

There is no requirement to implement a yield sign on the south side of the roundabout as the appropriate road markings and signage are already provided.

Q.47 Councillor Paddy McCartan

To ask the Manager to have the junction of Thorncastle Street, Ringsend, adjacent to Bridge Street, examined with a view to installing traffic lights. This has become a dangerous and extremely busy junction.

Reply:

The request for traffic signals at the above location has been added to the agenda of the Transport Advisory Group for examination and report by the Area Engineer. Enquiry No. 7011172 refers. The Councillor will be informed of the recommendation in due course.

Q.48 Councillor Paddy McCartan

To ask the Manager to have the pothole on Herbert Avenue at the back gate to Gowans repaired.

Reply:

This will be logged in our system for repair to be carried out as soon as possible.

Q.49 Councillor Paddy McCartan

To ask the Manager to have the hedges surrounding the bowling-green at Herbert Park trimmed back. They have become quite overgrown.

Reply:

The hedge surrounding the bowling green will be cut back over the coming weeks.

Q.50 Councillor Chris Andrews

Can the Manager arrange to have the footpaths along the Front of Verschoyle Court be repaired as a matter of urgency? The trees have made the footpath hazardous as a result of trees roots pushing up and cracking the footpaths. I was told this would be done previously and up to last week this work had not been done. There are a lot of senior citizens in this area and it is unfair to leave the footpath in a hazardous condition.

Reply:

This issue will be examined and a reply will be issued directly to the Councillor.

Q.51 Councillor Patrick Costello

To ask the Manager to take action to relieve the pressures on the pedestrian and cyclists at the Leeson Street Bridge, including the following:

- Increasing crossing time for pedestrian and cyclist on the north side of Leeson Street Bridge.
- Provide a bus priority gate on Leeson Street before the bridge to ensure public transport does not lose priority with the increased time for pedestrians.
- Providing improved pedestrian crossing on the south side of the bridge to provide alternatives for pedestrian looking to cross and reduce pressure on the crossing on the north side of the bridge.

Reply:

The sequencing at this set of lights was altered at the end of May, to allow the toucan crossing at Leeson Street Bridge to run twice in a cycle if it is demanded; reducing the average wait time for pedestrians and cyclists by 50%. The change was made in the interest of providing a safer environment for pedestrians and cyclists as this is an extremely popular location for commuters travelling by sustainable modes along the Grand Canal and towards the City Centre. Over 3000 pedestrians and 1500 cyclists cross the bridge (east / west) in the AM period and the maximum permissible cycle is 120 seconds on the north side of Leeson Street Bridge.

The improved conditions for pedestrians and cyclists travelling on the Grand Canal results in delays to bus movements across the bridge. There are approx. 98 Dublin Buses travelling inbound in the AM period, assuming 85 passengers per inbound bus, this equates to upwards of 8,000 passengers travelling inbound between 0700 and 1000hrs. The coding upgrade of this junction is scheduled for completion in September / October 2019. The purpose of this coding upgrade is to allow for the installation of radar detection which will improve the performance of the junction in terms of detecting cyclists and pedestrians. The result of this additional pedestrian phase on Leeson Street Bridge negatively impacts the journey times of buses to / from city centre due to buses held up on the bridge therefore an additional measure has been identified that will improve the operation of Leeson Street Bridge. This measure seeks to improve the coordination between the junction at Leeson Street / Mespil Road / Grand Parade and the toucan crossing on Leeson Street Bridge. The proposed changes to the coding and co-ordination of Leeson Street will maintain the benefits to pedestrian / cyclists and improve the journey times for buses.

Towards the end of August, our maintenance contractors repaired a faulty pedestrian push button unit (PBU). The faulty PBU resulted in delays to pedestrians and cyclists during the peak period. This has now been repaired and the operation of the pedestrian buttons has returned to normal.

Dublin City Council's Bus Priority team will be collaborating with the Bus Connects designers to ensure that proposals at this location prioritise pedestrian, cyclists and bus movements through Leeson Street.

Q.52 Councillor Patrick Costello

To ask the Manager to install outdoor stone chess tables in Harold's Cross Park. At the recent Harold's Cross Festival there was significant interest in the chess tournament, it would be positive to support this with a few stone seats and tables.

Reply:

If the proponent contacts the undersigned to arrange a meeting, the feasibility of this will be considered.

Q.53 Councillor Patrick Costello

To ask the Manager to address the build-up of weeds along Captains Road, Ravensdale Park, Poddle Park and surrounding roads.

Reply:

As an alternative to weed spraying, due to the desire to reduce the use of herbicide, crews from Waste Management Services have commenced a programme of manually removing weeds from our road network. It is intended that weed removal will continue to be carried out by this method over the coming weekends. These crews have been attending to streets throughout the city where weed removal has been requested by members of the public and identified by the Public Domain Officers based in the local Area Offices. In addition we offer support to local groups who carry out weed removal in their areas. We will ensure that the above mentioned roads are included in this manual weed removal programme.

Q.54 Councillor Patrick Costello

To ask the Manager for a list of roads in the local area that have had weeds removed or treated in the last 18 months.

Reply:

Up to this year, weed spraying was arranged through the area offices and carried out by private contractors. In the absence of a weed spraying programme this year, Waste Management Services commenced a programme of manually removing weeds from our road network towards the end of July 2019. Below is the list of roads in the South East Area which had their weeds removed manually since then.

Weed Control in the South East Area
Lombard Court, Dublin 2
Stephen's Lane, Dublin 2
Mount Drummond Avenue, Harold's Cross, Dublin 6, Dublin
Morehampton Lane, Donnybrook, Dublin 4
Oaklands Park, Sandymount, Dublin 4
Pembroke Lane, Ballsbridge, Dublin 4
Pembroke Park, Ballsbridge, Dublin 4
Pembroke Cottages, Donnybrook, Dublin 4
Belleville Avenue, Rathgar, Dublin 6
Cherryfield Avenue Lower, Dublin 6
Garville Avenue, Rathgar, Dublin 6
Greenmount Lane, Harold's Cross, Dublin 6
Milltown Path, Rathmines, Dublin 6
Rathmines Park, Dublin 6

Temple Gardens, Rathmines, Dublin 6
Harty Place, Dublin 8
Harty Court, Dublin 8
Spencer Street South, Dublin 8
Bangor Road, Crumlin Dublin 12
Benbulbin Road, Crumlin, Dublin 12
Cashel Road, Crumlin, Dublin 12
Crumlin Road, Drimnagh, Dublin 12
Long Lane, Dublin 8
Long Lane Close, Dublin 8
Derry Road, Crumlin, Dublin 12
Downpatrick Road, Crumlin, Dublin 12
Leighlin Road, Crumlin, Dublin 12
Saul Road, Crumlin, Dublin 12
Swanville Place, Rathmines, Dublin 6, Dublin
Victoria Avenue, Donnybrook, Dublin 4, Dublin
Auburn Avenue, Donnybrook, Dublin 4, Dublin
Saint Broc's Cottages, Donnybrook, Dublin 4, Dublin
Home Villas, Donnybrook, Dublin 4, Dublin
Ailesbury Road, Ballsbridge, Dublin 4
Patrick Street, Dublin 8
Fernvale Drive, Walkinstown, Dublin 12, Dublin
Windmill Road, Crumlin, Dublin 12, Dublin
Bath Avenue Place, Sandymount, Dublin 4
Grove Road, Rathmines, Dublin 6, Dublin
Derrlane Gardens
Aideen Place, Terenure, Dublin 6w, Dublin
South Lotts Road, Ringsend, Dublin 4, Dublin
Hazelbrook Road, Terenure, Dublin 6w, Dublin
Hazelbrook Drive, Terenure, Dublin 6w, Dublin
Corrib Road, Terenure, Dublin 6w, Dublin
Derraveragh Road, Terenure, Dublin 6w, Dublin
Aideen Avenue, Terenure, Dublin 6w, Dublin
Aideen Drive, Terenure, Dublin 6w, Dublin

Q.55 Councillor Chris Andrews

Can the Manager give an update on works to improve Cuffe Street and Digges Street following on from meeting with residents before summer and can the security of residents be prioritised in any future works?

Reply:

Works on the drainage have been completed at Cuffe Street / Digges Street and some resurfacing has been completed by Housing Maintenance. Further discussions need to take place regarding the bin store and any proposed works to the Play Area.

Q.56 Councillor Chris Andrews

Can the Manager give an update on progress in the Cabbage Patch and future plans for changes to entrances and the plans for the upgrading of the pitch and playground while also acknowledging the great work that Eddie McGuinness, Kelley Bermingham, Margaret Doolin and DCC community section have been doing with residents?

Reply:

The South East Area Office has been working for some time on the rejuvenation of the Cabbage Patch, Dublin 8 which has experienced a lot of anti-social problems in the past number of years. We held a public consultation earlier this year to ask local residents what they would like to see in the Cabbage Patch and among the suggestions was the refurbishment of the football pitch and possibly a play area for children. We have held a number of events in the Cabbage Patch this summer including a Dog Show in association with Pride and also a Family Fun Day to raise funds for the Hospice and these events were very well received by local residents as we endeavour to attract people to the Cabbage Patch for the right reasons. We hope to arrange a Halloween event for the Cabbage Patch this year.

As you may be aware the Cabbage Patch was historically a graveyard and continued in use, possibly up to 1931 and we have been working very closely with the City Archaeologist's Office in relation to what may be allowable on site. Some archaeological testing took place in August and we are awaiting the outcome of these tests which will guide our approach going forward. It is acknowledged that there are a wide range of external stakeholders in the local community who are committed to the betterment of the Cabbage Patch and their support to date has been invaluable.

Q.57 Councillor Chris Andrews

Can the Manager arrange to have the playground surface replaced in Conway Court as it is hazardous at this stage and is badly in need of replacing or comprehensive repair.

Reply:

An inspection of the playground will be carried out within the next 2 weeks to identify what repairs may be required.

Q.58 Councillor Chris Andrews

Following on from my previous request can the manager give an update on the work being done for assessment with a view to putting in place an extra Lollipop person in Ringsend village for children going to the two primary schools?

Reply:

The above request has been referred to the Traffic Advisory Group for examination and report **SR 7011024**. The Councillor should be informed of the recommendation in the next month.

Q.59 Councillor Chris Andrews

Can the Manager extend the yellow lines at entrance to Whelan and O'Rahilly House in Ringsend as the cars parked close to the entrances are creating a blind spot and makes it dangerous exiting the flats.

Reply:

The request to extend the double yellow lines at the above location has been added to the agenda of the Transport Advisory Group for examination and report by the Area Engineer. Enquiry No. 7011168 refers. The Councillor will be informed of the recommendation in due course.

Q.60 Councillor Chris Andrews

Can the Manager make the section on Aungier Street where the cars from Digges Street exit onto it a no parking at any time section as the traffic parks on Aungier street very close to the junction with Digges Street making it very dangerous for cars exiting from Digges Street onto Aungier street.

Reply:

The request for Clearway at all times on Aungier Street adjacent to the junction with Digges Street has been added to the agenda of the Transport Advisory Group for examination and

report by the Area Engineer. Enquiry No 7011086 refers. The Councillor will be informed of the recommendation in due course.

Q.61 Councillor Patrick Costello

To ask the Manager to install a toucan crossing on Rathgar Road at Garville Avenue.

Reply:

The request for a toucan crossing at the above location has been added to the agenda of the Transport Advisory Group for examination and report by the Area Engineer. Enquiry No 7011087 refers. The Councillor will be informed of the recommendation in due course.

Q.62 Councillor Patrick Costello

To ask the Manager to reduce the waiting time for pedestrians at traffic lights to support pedestrians.

Reply:

It is the policy of DCC to keep the pedestrian wait times to a minimum. It is also important to balance the need of all road users with pedestrians taking priority.

Typically during peak periods of the day junctions operate at 120 seconds cycle length due to competing demands from various approaches to a junction and to facilitate public transport interventions so that buses arrive at a junction with a green light.

Traffic signal upgrades and the installation of new traffic signals ensure pedestrian wait times are reduced where possible. This is achieved by enabling the pedestrian phase to run twice in a cycle which is currently employed across many sites across the city where appropriate.

Ongoing measures for pedestrian improvements include increasing amber time for pedestrians crossing the road by reducing the assumed design walking speed from 1.2m/s to 1m/s. This results in safer crossing conditions for vulnerable road users.

Q.63 Councillor Patrick Costello

To ask the Manager to resurface the ramps on Garville Avenue.

Reply:

This issue will be examined and a reply will be issued directly to the councillor.

Q.64 Councillor Danny Byrne

To ask the Manager to deal with the following issues at the green area adjacent to Stella Gardens, Irishtown:

- The grass remains unkempt and this discourages dog owners from cleaning up after their dogs. If it was cut regularly, dog litter would be more likely to be seen and removed. At present droppings become enmeshed in shoes, footballs, etc. on a daily basis and are brought into local houses.
- Also, beer cans, bottles, etc. are discarded on the grass area. Residents find they have to pick up other people's rubbish. They request the following; grass needs to be cut more often, permanent signs to warn people about the implications of not picking up dog excrement, permanent anti-litter signs.

Reply:

The grass on the main green at this location is mowed on a weekly basis during the growing season and as required thereafter to ensure that it is at the required standard.

During a recent site visit the area was considered to be well maintained and litter free.

The grass on the sloping bank is allowed to grow naturally so as to enhance biodiversity and increase the numbers of pollinator plants available for insects.

We will contact our colleagues in Waste Management and request that they install no dog fouling signs at this location

The Dog Warden service & the Public Domain Unit have been asked to monitor this area to address the issue of dog fouling.

Arrangements have been made to have anti-dog fouling and anti-litter signs installed at the above mentioned location.

Q.65 Councillor Danny Byrne

To ask the Manager if the two abandoned cars in the car park of the George Reynolds complex in Irishtown can be removed as soon as possible. Residents report them as being there for years, untaxed etc.

Reply:

The situation will be investigated and any cars deemed abandoned will be removed.

Q.66 Councillor Danny Byrne

To ask the Manager to prioritise the housing transfer of *details supplied.

Reply:

The above applicant is on the Transfer Housing list with Welfare priority with an application date of 28/07/2017, the applicant holds the following positions on this list:

Area	Bed size	Position
Area M	2	8
Area N	2	7

Dublin City Council allocate properties based on time on the list and currently there are applicants on the waiting list of longer standing who have to be considered as suitable vacancies arise. It is not possible to indicate accurately the prospect of an offer for any applicant. The number of vacancies arising will be a determining factor in the length of time applicants could expect to be on the waiting list.

Q.67 Councillor Danny Byrne

To ask the Manager to examine the following:

Our issue with the traffic is that as Grand Canal Dock develops, there is more and more traffic on the internal roads and therefore, more people need to access the area via Macken Street.

Currently, there are two traffic black spots in the area:

- Junction of Macken Street and Pearse Street: It is possible to turn right in both directions. This causes uncertainty and delays. This system was OK before the Samuel Beckett Bridge was built but at peak times, it can take an hour to drive the final kilometre back to Grand Canal Dock.
- Samuel Beckett Bridge has a bus lane, even though no regular Dublin Bus service seems to use the bridge. The bridge has traffic delays from 7.30 to 19.30 every day.
- There also isn't enough space for pedestrians to walk past each other on the bridge without entering the bike lane.

If the signalling and traffic flow isn't changed soon, all the new residents and businesses will result in gridlock all year round.

Reply:

1. A review of the operation of the traffic signals at Pearse Street / Macken Street will be undertaken in liaison with the Area Engineer and a follow up response will be issued in due course.

There is significant delays on Macken Street with most of this delay attributed to through trips movements for traffic traveling to/from Samuel Beckett Bridge. Local improvements on Macken Street will include the junction on Macken Street / Misery Lane. The current configuration is a three arm signalised junction and is due to be upgraded to a four arm signalised junction. This junction is to be delivered in line with the current construction of the mixed use development (Planning Ref 2457/16).

2. The bus lanes were provided to futureproof the bridge for future bus rerouting to the bridge. This rerouting is now proposed under the Bus Connects programme. In the interim, reassigning the bus lanes to general traffic would not improve the traffic conditions because there are single lanes only on both exits from the bridge
3. There are plans to provide an additional pedestrian/cyclist bridge east of Samuel Beckett Bridge. This bridge improve mobility and relieve pedestrian and cyclists congestion on Samuel Beckett Bridge.

A request to review the right turn issues at the junction of Macken Street and Pearse Street has been added to the agenda of the Transport Advisory Group for examination and report by the Area Engineer. Enquiry No. 7011088 Refers. The Councillor will be informed of the recommendation in due course

Q.68 Councillor Danny Byrne

To ask the Manager to communicate to Dublin Bikes the very poor service of giving no notice in relation to the closure of Bike Stations to facilitate construction.

There was no notice in relation to the recent closure of the Barrow Street Station. In addition the bike station was not replaced.

Can you please indicate the period of time this station will be out of service for and if a temporary station will be provided in its place?

Reply:

At the instruction of Dublin City Council, 'Station 70 - Barrow Street' was removed by the operator to safeguard the welfare of scheme members having regard to the significant construction activities taking place in the area. This is a temporary station removal. It is planned that the station will be reinstated in early 2020. This timeline will be kept under review and may be reduced or extended as conditions require. Alternative stations are located nearby at South Dock Road, Grand Canal Quay and Grand Canal Street Lower at Sir Patrick Dun's Hospital.

The removal of the station was notified to scheme members via the Just Eat dublinbikes website and associated Just Eat dublinbikes smart phone application on the 17th of July 2019. This is a significant disruption to members who use and rely on this station on a daily basis, however the safety of members is paramount and a precautionary approach to safety has been taken on this occasion.

Attempts have been made to find a temporary or permanent station site in the area to act as a replacement, including at Barrow Street and Ringsend Road. Unfortunately the operational

requirements of the scheme and characteristics of road layouts and underground utilities preclude the provision of an alternative station in the vicinity.

Q.69 Councillor Danny Byrne

Fenian Street and South Cumberland Street:

To ask the manager to have regard to local residents when allowing suspension of parking spaces “issue is the uncoordinated, and uncommunicative way the council goes about issuing such suspensions, apparently without considering local residents.”

Reply:

The application for suspension of parking spaces is made to the Parking Policy and Enforcement Unit of the Environment and Transportation Department. An applicant has to fill in an application form outlining the number of parking spaces sought for suspension and the reasons for the suspension, as well as the length of time for suspension. In addition to this application form the applicant must supply a letter of information for local residents informing them of the proposed suspension and declare that this letter has been issued to local residents. A map of the street indicating the location of the parking spaces for suspension has to be included also.

The decision to grant a suspension depends on the availability of parking spaces on the street or road, the numbers of resident parking discs held by residents on the street / road and the reasons why the suspension is requested and length of time of suspension. At all times the Parking Policy and Enforcement Unit seeks to support the rights of residents to park in their own area when deciding on granting suspensions of parking spaces. The overwhelming majority of suspensions are for a short period of days with a minority for longer periods. In the case of Cumberland Street South and Fenian Street there are 52 parking spaces in both Fenian Street and Cumberland Street. There are also, 3 resident permit holders on each street. A recent extension of a suspension of parking spaces on Cumberland Street South was granted for 2 spaces. While this is unusual in that it is extended for a number of months, the numbers of parking spaces in the street allowed for this without undue inconvenience for local residents to park.

Q.70 Councillor Danny Byrne

To ask the Manager that more attention is paid to street cleaning in the following streets (details supplied).

Reply:

Waste Management Services will certainly monitor the cleaning of the above mentioned streets and arrange extra cleaning there when necessary.

Q.71 Councillor Danny Byrne

To ask the Manager to prioritise the housing transfer of *details supplied.

Reply:

The above applicant is on the Transfer Housing List with an application date of 11/09/2013, the applicant holds the following positions on this list:

Area	Bed size	Position
Area H	2	43
Area M	2	27
Area P	2	29

Dublin City Council allocate properties based on time on the list and currently there are applicants on the waiting list of longer standing who have to be considered as suitable vacancies arise. It is not possible to indicate accurately the prospect of an offer for any

applicant. The number of vacancies arising will be a determining factor in the length of time applicants could expect to be on the waiting list.

It is acknowledged that the applicant has sought to be considered for medical priority. The applicant has submitted applications for medical priority on two separate occasions, 11/07/2018 and 16/08/2018.

If the applicant wishes to appeal this decision, please advise her to submit new supporting medical evidence outlining the change in circumstances since the most recent decision.

It is also acknowledged that the applicant has sought to be considered for Welfare Priority. The applicant has submitted applications for Welfare Priority on two separate occasions 9/5/2017 and 20/10/2018. An appeal with regard to a Welfare Priority decision is to be submitted within 21 working days of the date of the decision letter. The applicant can however, submit a new application for consideration for Welfare Priority with supporting documentation.

Q.72 Councillor Danny Byrne

To ask the Manager to prioritise the housing transfer of *details supplied.

Reply:

The above applicant is on the Transfer Older Housing List with an application date of 30/01/2019, the applicant holds the following positions on this list:

Area	Bed size	Position
Area M	1	56

Dublin City Council allocate properties based on time on the list and currently there are applicants on the waiting list of longer standing who have to be considered as suitable vacancies arise. It is not possible to indicate accurately the prospect of an offer for any applicant. The number of vacancies arising will be a determining factor in the length of time applicants could expect to be on the waiting list.

Should the applicant wish to be considered for a medical priority, he should complete a medical priority application form and submit it with supporting documentation to Housing Allocations for review.

Q.73 Councillor Danny Byrne

To ask the Manager what is the delay in converting the premises known as Jenny's Hair Studio at the New Houses in Ringsend to residential use.

Reply:

A reply will be forwarded to the Councillor within the next two weeks by Housing Maintenance.

Q.74 Councillor Tara Deacy

I understand that Cashel Road and Derry Road traffic calming speed ramps are considered to not require replacement by the traffic calming engineer.

Can we get the criteria, decision, evidence and reports from the roads engineer and traffic calming engineer for Derry and Cashel Roads? And on the junctions of Windmill / Captain's Road, Derry Road T junction outside of number 98 and Cashel / Derry Road junction.

Reply:

This issue will be examined and a reply will be issued directly to the Councillor.

Q.75 Councillor Tara Deacy

Can a disability parking space outside 630 Clonard Road be provided, the occupants are both visually impaired and have difficulty securing parking for nursing staff on home visits, due to an increase in traffic / parked cars on the road.

Reply:

The criteria for the provision of disabled parking bays outside private residences includes written confirmation as to whether the house has off-street parking or not, i.e. a driveway/garage or off-street private parking area accessed from the side or rear of the property. A bay will not be provided where there is off-street parking.

The Area Engineer has confirmed that the property listed above has off street parking therefore, a residential disabled parking bay will not be provided at the location.

Q.76 Councillor Tara Deacy

That two dog dirt bins be installed at each end of Clonard Road to address to increasing level of fouling.

Reply:

Waste Management Services are not installing dog dirt bins for the remainder of 2019. We have found that it is preferable to install standard litter bins as the dog fouling specific bins have a limited capacity and in many instances are being used to dispose of general litter in addition to dog foul. In general litter bins are installed on main thoroughfares, shopping locations, areas of heavy footfall and areas with other significant litter generators. Our Area Inspector will monitor litter and dog foul levels on Clonard Road to see if there is any merit in having a litter bin installed in this residential area.

Q.77 Councillor Tara Deacy

That the schedule for the maintenance and cleaning of the Poddle River be distributed to Councillors as litter in, and around the banks has increased over the summer months.

Reply:

The Drainage Division remove extraneous material from the City Rivers (including the Poddle) that could lead to flooding. This mainly involves removing material at the river racks before the rivers enter into culverts. This would be done weekly. The removal of litter and fly tipped material from the banks is the responsibility of Waste Management.

Q.78 Councillor Tara Deacy

Can the tree roots be removed from:
112 Rutland Grove
78 Rutland Grove
41 Rutland Grove

Reply:

There are currently no plans to remove tree roots from the above locations. Removing tree roots would inevitably result in the loss of the tree.

Q.79 Councillor Tara Deacy

Can the gate at 97 Rutland Grove be repaired or replaced? It is hazardous for the young children and elderly residents living there and needs to be repaired.

Reply:

Repairs to the gate of this dwelling were carried out by Housing Maintenance in March 2019. A further request has been logged for another inspection of this gate.

Q.80 Councillor Claire Byrne

To ask the Area Manager if he can please liaise with the service provider responsible for the manhole on the 2nd lane from the right, as you drive along Charlotte Way, outside the entrance to the office building car park beside the Camden Court Hotel. This manhole cover is causing serious noise pollution when cars pass over it. I understand this has been back fourth between DCC and the service provider for some time. Can the manager please ensure this is fixed as a matter of priority?

Reply:

On inspection, there is no information on the manhole-cover to indicate ownership, it only has a manufacturer's serial number. Until such time the identity of the service provider / providers populating said carriage-box can be established, no remedial action can be considered.

Q.81 Councillor Claire Byrne

To ask the Area Manager how many trees have been removed from Merrion Square to date, the reasons why the trees were removed, and can he please provide a full strategy and a timeline for the replanting of Merrion Square. Can he also provide an update on the tea rooms there?

Reply:

A conservation Plan for Merrion square was presented to the area committee in 2014, which set out proposals to restore the historical layout of the park, develop tearooms and restore the views and vistas to and from the park which were an important aspect of the original park design as a 'garden' to the Georgian square. This work has been implemented over a number of years and has involved the removal of a number of trees which had self-seeded and grown out of control. Particular care has been taken to preserve the large Plane trees which are the oldest and most important from an environmental perspective and re-planting with native and ornamental trees will be taking place over the winter months.

In relation to the tearooms, tenders for construction are gone out to tender and will commence in the 2020 capital programme subject to funding.

Q.82 Councillor Claire Byrne

To ask the Area Manager what can be done to address the on-going issue with tourist buses and coaches, parking on both College Green and Nassau Street, leaving their engines running for prolonged periods of time and causing noise and air pollution.

Reply:

Throughout the summer during the peak tourist season, two members of staff have acted as ambassadors to monitor this area. They encouraged tourist bus drivers to not park for long periods and to move their buses to the National Transport Authority Coach Park or to park at the coach bays on Merrion Square. There are no parking locations for tourist buses on College Green.

Q.83 Councillor Claire Byrne

To ask the Area Manager if he can please increase the frequency of street cleaning and to carry out curb side weeding on Wilson Place, and the laneway all the way up to Mount Street at the back of Holles Street Hospital. This area has been neglected for some time and needs attention. There is also an issue with illegal dumping here, can the manager please also try to address this.

Reply:

Waste Management Services will have the cleaning and weeding of this area completed during the first week of September 2019. We will monitor the future cleanliness of this area and have extra cleaning carried out there when necessary. Our Litter Warden will include this area as part of his regular patrol.

As an alternative to weed spraying, crews from our Waste Management Services Division have been mobilised to commence a programme of manually removing weeds from our road network. It is intended that weed removal will continue to be carried out by this method over the coming weekends. The areas suggested by the Councillor in her question will be included for attention in the coming weeks.

Litter Wardens will increase their presence in the laneway identified in an attempt to identify those responsible for illegal dumping.

Q.84 Councillor Claire Byrne

To ask the Area Manager if he would please consider providing secure off the leash dog runs in Ringsend Park and Sean Moore Park.

Reply:

Both parks have been assessed and they are considered unsuitable as a location for an 'off the leash dog run' due to the lack of space and the need to keep the parks open to a wide range of user groups.

Q.85 Councillor Claire Byrne

To ask the Area Manager if he would please consider reviewing the parking regime on Ringsend Park Road as there is an issue with non-residential long stay parking here.

Reply:

The way to eliminate long term commuter / business parking in residential areas is to introduce Pay and Display and a Permit Parking Scheme.

Dublin City Council will proceed with the preparation of a Pay and Display and Permit Parking Scheme and subsequent ballot of residents where it is first established that there is a demonstrable and clear desire in favour of a scheme and in accordance with the criteria below. This may take the form of a number of written requests or a signed petition from residents of the road.

Please note, therefore, that on receipt of written supporting evidence from other residents of the road, the request for a Parking Scheme will be referred to the Transport Advisory Group for examination and report. On referral to the Transport Advisory Group, the request will be examined in accordance with the following guidelines:

- Suitability of the road for a Pay and Display and Permit Parking Scheme.
- That the road is mainly residential where in excess of 80% of available on-street parking is normally occupied on inspection during business hours.

A proposed Parking Scheme would be subject to a plebiscite of the residents concerned listed on the Register of Electors. The road must have a minimum width of 6.5 metres for two-sided parking and a minimum width of 4.6 metres for one-sided parking to allow access for emergency services and refuse collection.

Please note that these are minimum dimensions which only provide for one lane of traffic and are only suitable for roads with low traffic volumes. It is important to note that a Parking Scheme cannot be recommended on a road where the minimum width is less than 4.6 metres. Where a road is wide enough for a scheme with one-sided parking only, double yellow lines will be required on the opposite side of the road. As a result, there may be a reduction in the number of parking spaces currently available to residents.

In summary, in order to introduce Pay and Display and Permit Parking, it will be necessary for written supporting evidence by way of a petition from residents of the road, giving names and addresses, indicating their clear support for such a scheme. This petition should be signed by at least 25% of the households concerned.

Q.86 Councillor Claire Byrne

To ask the Area Manager can he please confirm the ownership, status and development intentions for the following sites?

- Site on Richmond Street South, adjacent to 11 - 12 Richmond Street South, Saint Kevin's, Dublin 2.
- Small site beside Q Park on Werburgh Street (see photo).
- Site on opposite side of Werburgh Street, backing on to Dublin Castle (currently partially a car park).

Reply:

The site known as 15 and rear of 14 South Richmond Street is in Council ownership. It was licenced to an adjoining owner until 2017 and a proposal to place it on the market at that time did not proceed. Consideration is currently being given to its most beneficial future use.

The majority of the small site south of Q Park is in the ownership of the Council with the exception of a small strip along the car park wall which is privately owned. The site's development potential is severely limited by archaeological issues relating to the historic City Wall.

The Council recently acquired the plot to the rear of the site to the east of Werburgh Street, backing on to Dublin Castle. The vacant plot to the front of this site which is used for car parking is in Council ownership but is the subject of an ongoing adverse possession claim.

Q.87 Councillor Claire Byrne

Specifically in relation to buildings in the South Georgian Core, what regulations / limitations / procedures exist for the placing of (a) temporary signage or (b) permanent signage:

- (a) On railings
- (b) On protected structures
- (c) Within the curtilage of a protected building
- (d) Within the curtilage of a non-protected building.

and what actions are taken in the event that signage does not comply with the regulations/limitations/procedures laid down by Dublin City Council.

Reply:

The regulations, policies, procedures and exemptions in relation to signage which apply to the South Georgian Area are complex and depends on specific circumstances on a case by case basis.

Railings are usually part of the curtilage of a protected structure. Section 57(1) of the Planning and Development Act, 2000 (as amended) provides that the carrying out of any works such as would materially affect the architectural character of a protected structure or any element of the structure that contributes to its special interest, is not exempted development and requires planning permission. This includes the installation of both temporary and permanent advertising signs.

The erection or installation of new signage, or other form of advertising, whether temporary or permanent, to a protected structure or its curtilage (such as railings) is considered to be development that would materially affect the architectural character of the structure and is not exempted development. Therefore, it requires planning permission. Section 8.5.7 'New items fixed to the exterior of the building', of the Architectural Heritage Protection Guidelines for Planning Authorities (2011), provides national guidance here.

Generally, the provision of a standard-sized (A4 or smaller) company sign, such as a brass nameplate, at the main entrance of a protected Georgian building would be considered exempted development (and not require planning permission).

The repair and restoration of already permitted signage on a protected structure may be considered exempted development by the planning authority, where there is no significant change in the size of the sign, the lettering and materials (e.g. repainting of a painted traditional shopfront and fascia sign).

An owner or occupier of a protected structure may make a request in writing to the planning authority under Section 57(2) for a declaration as to the type of works which would or would not materially affect the character of the structure or element of special interest of the structure.

The Conservation Section in Dublin City Council also provides a declaration process under Section 5 of the Act in relation to actual proposals for works, repairs and/or minor development to a protected structure, which may include signage. This Section 5 procedure is only for specified works (compared to the Section 57 declaration on more general 'types of works').

Specific provisions requiring planning permission for signage and other development are generally provided in Architectural Conservation Area (ACAs), in accordance with Section 82(1) of the Planning and Development Act, 2000 (as amended). For example, the Fitzwilliam Square and Environs ACA (adopted in 2009) provides in Section 6, on page 18, that "*Planning Permission is required for all signs (regardless of size and location) including projecting signs, erected externally within the area of the ACA.*" In ACAs the City Council is required to consider the material affect that a proposed development, such as signage, would be likely to have on the architectural conservation area, under Section 82(2) of the Act.

In relation to non-protected buildings, advertisements which can be considered exempted development are set out in Part 2 of Schedule 2 of the Planning and Development Regulations. These include business signage within certain size restrictions. However in most cases the erection of signage requires planning permission. The South Georgian core is a designated conservation area and it is recognised that these areas require special care in terms of development proposals and works. In assessing planning applications, Policy CHC4 is applied to ensure that development within these areas contributes positively and does not harm buildings or their setting.

The erection of signage in relation to sales and letting is exempted development subject to size restriction and the condition that no advertisement shall remain in place for more than 7 days after the sale or letting to which the advertisement relates.

In the event that the signage does not comply with the legislation outlined above, the Councils Planning Enforcement Section will investigate the matter, when brought to its attention in writing.

Q.88 Councillor Claire Byrne

To ask the Area Manager can he please increase the frequency of street cleaning along South Lotts Road? This was requested previously and some improvements were made however the litter problem is worse again recently.

Reply:

Waste Management Services will have South Lotts Road cleaned five days a week, Monday to Friday, to ensure that this street is kept as clean as possible.

Q.89 Councillor Claire Byrne

To ask the Area Manager when work will be done on *details supplied.

Her flat flooded recently and the floors urgently need replacing and the electrics checked. Can you also consider this lady for a transfer as she is living right beside on-going significant noise anti-social behaviour and her son is subjected to bullying?

Reply:

Housing Maintenance have attended to this flat in relation to damage caused by a leak from a flat overhead. The tenant informed us that she was submitting a claim in relation to damage caused.

Our Electrical Services Unit called out to this tenant on two occasions, however did not gain access. A further call will be made and contact will be made with the tenant in relation to carrying out an electrical inspection.

Q.90 Councillor Hazel Chu

To ask the Manager to provide extra bike parking throughout the Ranelagh village.

Reply:

The area will be assessed for the suitability of cycle parking and if deemed appropriate the location will be included in a future batch of the On-Street Cycle Parking Project.

Q.91 Councillor Hazel Chu

To ask the Manager what the policy for use of zebra crossings and if they would consider using more zebra crossing instead of traffic lights.

Reply:

In general, the policy is to provide signalised crossings rather than Zebra Crossings. Where a Zebra crossing is being considered the road must be one lane in each direction and the location has a low volume of traffic. One of the main drawbacks of Zebra Crossings is that we cannot provide Audio Tactile units for visually impaired to assist them in using them unlike a standard signalised crossing.

Q.92 Councillor Hazel Chu

To ask the manager to provide recycling services for Donnybrook as there is no convenient recycling services.

Reply:

The Waste Management section is committed to providing the best recycling service we can in a busy, urban environment. We are always open to the possibility of adding new bottle banks.

However the reality is that finding sites for new bottle banks in the city is very problematic.

We are restricted to where we can place them under planning regulations (SI 600 of 2001) e.g. *"no such receptacle shall be situated within 50 metres of any house, save the consent in writing of the owner or occupier"*.

Bottle banks are incredibly difficult to maintain and despite cleaning by our own staff and contractors, dumping is often an issue for us – which makes them unpopular.

Furthermore our service provider needs to be able to service all sites in a safe manner.

I hope this explains in greater detail the challenges we face in locating bottle banks in Dublin City.

I can confirm that all possible locations are investigated as to their suitability and where at all possible we will locate new ones.

Q.93 Councillor Hazel Chu

To ask the Manager to provide a pedestrian crossing on Rathmines Road at the junction of Rathmines Road and the canal.

Reply:

The request for a pedestrian crossing at the above location has been added to the agenda of the Transport Advisory Group for examination and report by the Area Engineer. Enquiry No. 7011089 refers. The Councillor will be informed of the recommendation in due course

Q.94 Councillor Hazel Chu

To ask the manager to ensure Sunday openings for all bring centres.

Reply:

Currently bring centres which collect green waste are open on Sundays over the summer to facilitate an increase in demand of this waste stream.

Q.95 Councillor Hazel Chu

To ask the Manager to provide an update on my previous question relating to recycling in Supervalu, Ranelagh.

Reply:

Unfortunately the Supervalu in Ranelagh is not a suitable location to host bottle banks. The arch entering the carpark does not provide clearance for the truck to enter and service the site.

Q.96 Councillor Hazel Chu

To ask the Manager the possibility of widening the footpath outside Diep Take Away at Ranelagh village. Currently that location is a hazard to people with disabilities, elderly and families with small children in buggies.

Reply:

The request for widening the footpath at the above location will be examined by the Area Engineer and the Councillor will be informed of the recommendation. Enquiry No. 7011090 refers.

Q.97 Councillor Hazel Chu

To ask the Manager to schedule a day and work with residents where parked cars on Haddington Road would be removed so as to clean the street and clear the drains properly. Given that the area has flooded recently due to blocked drains.

Reply:

I can be contacted by the residents group at mick.boyle@dublincity.ie to schedule a time and date when they would have the parked cars removed from the road so as to allow a good cleaning of the street, particularly along the kerbsides.

Q.98 Councillor James Geoghegan

To ask the Manager if he could confirm when new road surfacing on Ashfield Road, Ashfield Avenue and Mornington Road in Ranelagh will take place given it is some time since the construction of the nearby hotel has been complete and residents promised a resurfacing.

Reply:

This issue will be examined and a reply will be issued directly to the Councillor.

Q.99 Councillor James Geoghegan

To ask the Manager if he could investigate the parking situation at Vergemount Hall, Clonskeagh where concerns have been expressed to me that parking on the road means it

is not clear that an emergency vehicle could get by when all these cars are parked as densely as the photograph attached evidences.

Reply:

There are double yellow lines and parking restrictions at Vergemount Hall with one or at most two parking bays. Dublin Street Parking Services have been asked to monitor this location and to take enforcement action where necessary.

Q.100 Councillor James Geoghegan

To ask the Manager if as part of the resurfacing works ongoing at Morehampton Road and Belmont Avenue that bollards and planter boxes outside Donnybrook Fair and the island with yellow / black edging and street furniture as per photos attached could be repainted and cleaned, something the Donnybrook Tidy Towns committee had done with the support of Dublin City Council prior to the commencement of the road surface works that has now caused the damage.

Reply:

Road Maintenance Services has met a representative of the Donnybrook Tidy Towns Committee recently with Roadstone the contractor carrying out the resurfacing works. It was agreed with Roadstone that they would power wash the planter boxes and the bollards to remove dust and grime that may have been caused by the works. Roadstone are not responsible for the deterioration of the black and amber paint on the islands. Road Maintenance Services do not paint traffic islands.

The Public Domain Unit will support the local Donnybrook Tidy Towns in whatever way we can to restore the area to the standard it was before the road works.

Q.101 Councillor Kevin Donoghue

To ask the Manager that the planter in Dowling Court be trimmed back as it has become significantly over grown. Pictures included.

Reply:

Parks and Landscape Services shall arrange to cut back and maintain the planters at this location over the coming weeks.

Q.102 Councillor Kevin Donoghue

To ask the Manager if he will have repairs carried out in the Bremen Avenue area (photos attached).

Reply:

This issue will be examined and a reply will be issued directly to the Councillor.

Q.103 Councillor Kevin Donoghue

To ask the Manager if they will carry out repairs to the road at the corner of *details supplied (photos attached).

Reply:

This issue will be examined and a reply will be issued directly to the Councillor.

Q.104 Councillor Kevin Donoghue

To ask the manager the procedure that was employed in terms of informing local residents about the removal the Dublin Bike station at Barrow Street in Dublin 4.

Reply:

At the instruction of Dublin City Council, 'Station 70 - Barrow Street' was removed by the operator to safeguard the welfare of scheme members having regard to the significant construction activities taking place in the area. This is a temporary station removal. It is

planned that the station will be reinstated in early 2020. This timeline will be kept under review and may be reduced or extended as conditions require. Alternative stations are located nearby at South Dock Road, Grand Canal Quay and Grand Canal Street Lower at Sir Patrick Dun's Hospital.

The removal of the station was notified to scheme members via the Just Eat dublinbikes website and associated Just Eat dublinbikes smart phone application on the 17th of July 2019. Local residents were not separately informed. This is a significant disruption to members who use and rely on this station on a daily basis, however the safety of members is paramount and a precautionary approach to safety has been taken on this occasion.

Attempts have been made to find a temporary or permanent station site in the area to act as a replacement, including at Barrow Street and Ringsend Road. Unfortunately the operational requirements of the scheme and characteristics of road layouts and underground utilities preclude the provision of an alternative station in the vicinity.

South East Area - TAG Meeting Minutes for Noting

(Area Committee Date: 14/10/2019)

Item	Enquiry	SP Ref	Topic	Road	Post	Request Description	Tag Result	Tag Comments	Request By	Received	Sec
1	7000426		Disab Park Bay Residential	KENILWORTH PARK (SE)	Dublin 6W	in a space near the Kimmage Road Lower junction.	Recommended	SR 7000426 Disabled Parking Bay Recommended There is Pay & Display and Permit Parking on Kenilworth Park which is close to the resident's address. Parking on Kimmage Road Lower where applicant is a resident is not possible. Stat Disabled Parking Bay (RRM 016) required commencing at the end of the double yellow lines 5.60m North East from Lamp Stand No. 1. The Disabled Parking Bay will extend 2.1m perpendicular from edge of the double yellow lines extending 7.0m south eastwards ending 2.1m at kerbside. The Disabled Parking Bay will be painted blue with the white Disabled Person's Parking Bay Symbol (RRM 015) centred in the bay.	Member of the Public	16/11/2017	0
2	7002608		P&D/Permit Parking	ZION ROAD (SE)	Dublin 6	Parking scheme for cul-de-sac outside The High School.	Not Recommended	SR: 7002608 Zion Road, Rathgar, Dublin 6 Residents request for Pay & Display is not recommended Upon site visit to Zion Road at 15:00hrs on 5th September 2019, it was observed that due to The High School finishing for the day road occupancy on Zion Road was at 80% with the majority of vehicles being parents staying in their cars waiting for their children finishing school for the day. No vehicles were seen blocking any residential entrances once the school children reached their parent's vehicle the vehicle departed Zion Road. After 16:00 vehicle occupancy was less than 40% However the Area Engineer has recommended that two sets of double yellow lines be located at the entrance/exit gates to The High School to facilitate vehicles turning back around in order to exit Zion Road.	Member of the Public	30/04/2018	0
3	7003471		P&D/Permit Park (Change Hours)	CHARLEVILLE ROAD (SE)	Dublin 6	Extend parking scheme to 24 hours, 7 days a week.	Awaiting Survey	Extended operational hours, Mon-Sun, 07.00-24.00 proposed, subject to ballot of residents indicating a majority in favour of the proposal.	Member of the Public	20/06/2018	0
4	7003590		P&D/Permit Park (Change Hours)	ANGLESEA ROAD (SE)	Dublin 4	Extend or amend hours.	Recommended	Accepted at ballot of residents, Hours Mon-Sun 07.00-24.00. 207 on the register, 81 votes returned, 45 for, 28 against, 8 spoilt. The pro-rata vote was 42 for, 26 against.	Councillor	29/06/2018	0
5	7004292		Double Yellow Lines	WESTMORELAND PARK (SE)	Dublin 6	rear of 3 Chelmsford Close.	Not Recommended	The site was inspected at the rear of 3 Chelmsford Place on Westmoreland Park.it is illegal to park on a footpath - Under The Road Traffic (Traffic & Parking) Regulations, Section 36 paragraph(2) (i) A vehicle shall not be parked on a foot way, a grass margin or a median strip.. Infringements should be reported to Dublin Street Parking Services tel no. 01 6022500	Member of the Public	15/08/2018	0
6	7004615		Double Yellow Lines	VERSCHOYLE PLACE (SE)	Dublin 2	DYLS to prevent vehicles blocking exit to rear of 15 Mount St	Not Recommended	Under the Road Traffic Act it is illegal to block an entrance. Infringements should be reported to Dublin Street Parking Services tel no. 01 6022500 or the Gardai as they occur. Double yellow lines are not recommended as it is illegal to block an entrance without the owners authority.	Member of the Public	30/08/2018	0

South East Area - TAG Meeting Minutes for Noting

(Area Committee Date: 14/10/2019)

Item	Enquiry	SP Ref	Topic	Road	Post	Request Description	Tag Result	Tag Comments	Request By	Received	Sec
7	7004668		Double Yellow Lines	MARK'S LANE (SE)	Dublin 2	DYLs for this location, to prevent dangerous parking by rental vehicles.	Recommended	In order to facilitate emergency vehicle and maintain flow of traffic exiting Marks Lane double yellow line are recommended on north side of Marks lane on Lombards St East. Stat Instal 20m of l Dyl on north side of Marks lane ofrom junction of Lombards St East with Marks Lane (avoid 5m from the junction)	Member of the Public	03/09/2018	2
8	7006092		3.5 Tonne Limit	MOUNT TALLANT AVENUE (SE)	Dublin 6W	Delivery time restrictions, or other measures, to deal with traffic congestion caused by large trucks loading & unloading at this location.	Not Recommended	Mount Tallant Avenue is a public road and vehicles are allowed to drive through it and carry out their deliveries on it as business are operating on the road. There is a 3.5 tone restriction in place at the entrance of this location. However, the 3 tonne limit does not apply to vehicles wishing to access a particular road to make a delivery. The area is listed as a potential Neighbourhood Traffic Scheme.	Councillor	19/11/2018	0
9	7006370		Children Crossing Sign	TERENURE ROAD EAST (SE)	Dublin 6	Signage for entrance to Housing Estate.	Recommended	Following investigation a "children crossing" sign (W142) is recommended at the entrance of Bothar-Thri-an-Luir -Thoir / Orwell Mews (at junction with Orwell Road) as it is the entrance to a housing estate from a main traffic route.	Councillor	04/12/2018	0
10	7008288	Q 54 SCAC 04/19	Double Yellow Lines	HERBERTON DRIVE (SE)	Dublin 12	Outside No. 21	Not Recommended	<p>It is not recommended to install parking restrictions, such as placing double yellow lines across driveways, where restrictions are already covered under the law.</p> <p>Under The Road Traffic (Traffic & Parking) Regulations, Section 36 paragraph (2) g; "A vehicle shall not be parked in any place, position or manner that will result in the vehicle obstructing an entrance or an exit for vehicles to or from a premises, save with the consent of the occupier of such premises;"</p> <p>Infringements should be reported to Dublin Street Parking Services tel no. 01 6022500 or the Gardaí as they occur.</p>	Councillor	08/04/2019	0
11	7009540		Double Yellow Lines	STANNAWAY AVENUE (SE)	Dublin 12	DYLs on eastern side of the junction.	Recommended	<p>SR RECOMMENDED - After a site visit it was noticed that there were cars parking on Captain's Drive hindering movement for Dublin bus.</p> <p>Stat – Install Double Yellow Lines on Stannaway Avenue north side, starting on Captain's Drive from a point directly across from LS4 on the east side of the carriageway moving in a southerly direction around the corner for approx. 83m on Stannaway Avenue.(excluding entrances).</p>	Internal	05/06/2019	0
12	7009541		Double Yellow Lines	STANNAWAY AVENUE (SE)	Dublin 12	On the southern side of the Avenue.	Recommended	<p>SR RECOMMENDED - After a site visit it was noticed that there were cars parking on Stannaway Ave hindering movement for Dublin bus.</p> <p>Stat – Install Double Yellow Lines on Stannaway Ave south side starting from LS13 moving in an easterly direction for approx. 19m</p>	Internal	05/06/2019	0



South East Area - TAG Meeting Minutes for Noting

(Area Committee Date: 14/10/2019)

Item	Enquiry	SP Ref	Topic	Road	Post	Request Description	Tag Result	Tag Comments	Request By	Received	Sec
13	7009771		Parking Restrictions	DOWLING'S COURT (SE)	Dublin 2	DYs or other parking prohibitions for this location.	Not Recommended	SR not recommended. The entrance to Dowling Court has double yellow lines and there were two parked cars in the square, these cars should not be causing an obstruction to any premises door or gate. Any parking on double yellow line or obstructing a premises are a matter for Dublin City Council Parking section 01 - 602-2500 and the Gardai.	Councillor	18/06/2019	0
14	7009989		Double Yellow Lines	CRANMER LANE (SE)	Dublin 4	To prevent cars free parking in a dangerous location	Recommended	Service request recommended: Cranmer Lane: Commencing at a point 7 metres East of lamp standard 4 along kerb line, on the opposite side of the carriage way (south side) install 14 metres of Double yellow line in a westward direction along the kerb line.	Councillor	28/06/2019	0
15	7010058		Disab Park Bay Residential	DARLEY STREET (SE)	Dublin 6	outside 19 Darley Street.	Recommended	SR 7010058 Recommended Request for Disabled Parking Bay at 19, Darley Street, Harold's Cross, Dublin 6 The Area Engineer recommends that a disabled parking bay (RRM 015) be provided outside the premises at No. 19, Darley Street, Dublin 6. The disabled parking bay is to conform to specifications as stated in Traffic Sign Manual 2010. Chapter 7. Stat At a point 1.5m south west from lamp stand No. 3 (edge of double yellow line) located on the north west side on Darley Street located opposite Harold's Cross Cottages. Provide a disabled parking bay 2.10m from the west kerbside of Darley Street extending 7.0m south west. The area of the Disabled bay should be painted blue with the Disabled Person's Parking Bay Symbol (RRM 015). The Disabled Symbol should be 2.5m x 1.2m to be located in the centre of the Disabled Parking Bay.	Member of the Public	03/07/2019	0
16	7010773		Disab Park Bay Residential	ASHDALE ROAD (SE)	Dublin 6W		Recommended	SR 7010733 – Request for a Disabled Parking Space outside No. 43 Ashdale Road. Dublin 6W Recommendation to provide a parking bay outside No. 43 Ashdale Road, Dublin. Starting at a point on the west side of Ashdale Road directly outside property No. 43 Ashdale Road a disabled Parking Bay with dimensions 7.0 x 2.1m on the existing parking bay (RRM 016) to be lined so that the centre of the Disabled Parking Bay is perpendicular to the entrance of No. 43 Ashdale Road. The Disabled Parking Bay should be painted blue with the Disabled Persons' Parking Symbol (RPM 015) of 2.5 x 1.2m located in the middle of the blue disabled parking bay.	Member of the Public	12/08/2019	0

South East Area - TAG Meeting Minutes for Noting

(Area Committee Date: 14/10/2019)

Item	Enquiry	SP Ref	Topic	Road	Post	Request Description	Tag Result	Tag Comments	Request By	Received	Sec
17	7010853		Parking Restrictions	BENSON STREET (SE)	Dublin 2	Issues re parking on Benson Street	Recommended	Benson Street, Dublin 2 Remove the bus cage and bus markings from east side on Benson Street (200.028.00) from a point 8m north of the junction with Hanover Quay extending northwards for 46m. Reinstate double yellow lines (200.029.00) on east side of Benson Street at a point 8m from junction with Hanover Quay extend double yellow lines northwards for 53m to junction with Green Street.	Member of the Public	15/08/2019	0
18	7010910		Double Yellow Lines	MOUNT DRUMMOND AVENUE (SE)	Dublin 6	on the road	Recommended	SR 7010910 No. 34 Mount Drummond Avenue, Harold's Cross Recommended: double yellow lines on the bend of No. 34, Mount Drummond Avenue and Mount Drummond Square. There are existing double yellow lines on the south east bend of Mount Drummond Square beginning at No 36 and ending south westwards at No 37 Mount Drummond Square. In the interests of continuity double yellow are to be provided. There are issues with cars parking on the pavement on Mount Drummond Square and Mount Drummond Avenue these Infringements should be reported to Dublin Street Parking Services tel no. 01 602-2500 or the Gardaí for enforcement under the law. STAT Starting at a point 7.65m northwest from public lamp stand No 16 commencing at No. 34 Mount Drummond Avenue. Double yellow lines (RRM 007) for 25.71m south westwards to be curtailed before the drive way at No 35 Mount Drummond Square	Councillor	20/08/2019	0
19	7011024		School Warden	THORNCASTLE STREET (SE)	Dublin 4	To allocate an extra lollipop person for the two primary schools in Ringsend	Not Recommended	A count was carried out and did not meet the warrant. We would not recommend an additional school warden at the two school locations.	Councillor	27/08/2019	0
20	7011026		No Left Turn Except Cyclists	NUTLEY LANE (SE)	Dublin 4	Add "Except Cyclists" to existing "No Left Turn" restriction at this junction.	Recommended	SR 7011026 Recommended No left turn except cyclists on Nutley Road, Dublin 4 There is an issue of a "No Left Turn" on the south west side of Nutley Lane opposite light stand No. 7 in operation from 0700 – 1000 Monday - Saturday. The sign and supplementary plate are partly obscured by tree foliage which may account for non-compliance. The Service Request is for "Except Cyclists" to be added to the supplementary plate The issue of vehicles turning left onto Nutley Road is a matter for the Gardaí. This issue will be addressed with them at the next Traffic Advisory Group meeting, October 2019.	Councillor	27/08/2019	0



South East Area - TAG Meeting Minutes for Noting

(Area Committee Date: 14/10/2019)

Item	Enquiry	SP Ref	Topic	Road	Post	Request Description	Tag Result	Tag Comments	Request By	Received	Sec
21	7011086		Clearway	AUNGIER STREET (SE)	Dublin 2	clearway at all times on Aungier Str adj to junction with Digges Street.	Not Recommended	<p>observed there are issues with vehicles (particularly vans) parking on the single yellow and double lines on the north side of Digges Street Upper near the junction with Aungier Street. Deliveries are permitted for 30minutes for vehicles loading and unloading on a single yellow line for a maximum of 30 mins only. However it was observed by the Area Engineer that delivery vehicles are parking on the pavement.</p> <p>Under S.I. No. 182/1997 - Road Traffic (Traffic and Parking) Regulations, 1997</p> <p>Rules of the Road Part 4: "When parking a vehicle you must ensure that: - It does not obstruct an entrance to property without the owners consent." "Either wholly or partly on a footway, a grass margin or a median strip." Under The Road Traffic (Traffic & Parking) Regulations, Section 36 paragraph (2) c, "Within 5 meters of a road junction."</p> <p>Illegal parking should be reported to Dublin Street Parking Services Ph. 01 602-2500 or to the Gardaí as they occur. The issues raised by the Area Engineer on Digges Street Upper will be brought to the Gardaí and Parking Enforcements attention at the next Traffic Advisory Group meeting, October 2019.</p>	Councillor	30/08/2019	0
22	7011088		No Right Turn	MACKEN STREET (SE)	Dublin 2	turning right in both directions at junction causing uncertainty and delays	Not Recommended	<p>SR 7011088 - Not Recommended</p> <p>A site visit was undertaken by Local Area Engineers and an ITS Officer on Friday 21st September 2019 to review the operation of this junction and examine potential alternative arrangements. The congestion at this junction can be explained due to limited downstream capacity onto Cardiff Lane and Samuel Beckett Bridge. Capacity has to be protected on the North Quays as increasing capacity on Macken Street / Cardiff Lane would result in eroding capacity on the North Quays resulting in delays on the operation of Buses & Coaches.</p> <p>There are currently 5 phases during the typical 120 second cycle length period. In order to add an extra phase to separate out the right turning movements would result in less times for other phases and would result in an inefficient junction. Additional time has now been afforded to the phase that permits the right turn only movements from Pearse Street onto Macken Street which will offer increased priority for these movements. We will continue to monitor this junction on an ongoing basis.</p>	Councillor	30/08/2019	0



South East Area - TAG Meeting Minutes for Noting

(Area Committee Date: 14/10/2019)

Item	Enquiry	SP Ref	Topic	Road	Post	Request Description	Tag Result	Tag Comments	Request By	Received	Sec
23	7011168		Double Yellow Lines (Extend)	THORNCASTLE STREET (SE)	Dublin 4	Outside O'Rahilly House and Whelan House entrances	Recommended	At Whelan House Starting at Street Light No 5 on the west side of Thorncastle Road opposite Cambridge Road. Approximately 9.10m north from lamp Stand No 5 at the edge of the P&D Bay extend double yellow lines north to corner of bend before the entrance to Whelan House. At O'Rahilly House Nos. 25-56 Starting at lamp stand No 7 on west side of Thorncastle Street extend double yellow line to corner of entrance to O'Rahilly House Nos. 25-56. Starting at lamp stand No 8 on west side of Thorncastle Street extend southwards for 5m double yellow lines to entrance bend at O'Rahilly House Nos. 25-56.	Councillor	04/09/2019	0
24	7011495		Disab Park Bay Residential	MARLBOROUGH ROAD (SE)	Dublin 4	Disabled parking bay for o/s 4 Marlborough Road.	Recommended	Recommended On assessment for a disabled parking bay, the area engineer approves this request to be located outside No. 4 Marlborough Road, Ranelagh, Dublin 4. Stat A disabled bay with a blue background (RPM 015) to be lined on the south west side of Marlborough Street beginning at point directly opposite the Pay & Display and Permit Parking sign and pole located outside property No. 4, Marlborough Road. The disabled parking bay should extend south westwards for 7m. The disabled parking bay symbol is to be 2.5m x 1.2m and located in the centre of the blue background which is to lined inside the border of the disabled parking bay.	Member of the Public	25/09/2019	0
25	7011594		Double Yellow Lines	ZION ROAD (SE)	Dublin 6		Recommended	The Area Engineer has recommended that two sets of double yellow lines be located at the entrance/exit gates to The High School to facilitate vehicles turning back around in order to exit Zion Road. Stat : On the west side of Zion Road starting at a point outside the entrance/exit gates of The High School add double yellow lines (RRM 007) for 11.25m curtailing at the entrance gate to the Rathgar Hockey Club. On the east side of Zion Road beginning at the entrance/exit gate to The High School double yellow lines (RRM 007) required for 10.25m, curtailing at the entrance driveway of No. 38 Zion Road.	Internal	02/10/2019	0
26	90050837	SP_39737	3.5 Tonne Limit	HOLLES ROW (SE)	Dublin 2	Restriction of HGVs for Holles Row.	Recommended	Following investigation it is recommended that a W114 "Maximum Gross Weight of 3.5 ton" sign be provided at the entrance of Holles Row with Holles Street facing oncoming traffic. Note: the 3.5 tonne limit does not apply to vehicles wishing to access the road to make a delivery.	Member of the Public	16/08/2017	0

**To the Chairperson and Members of the
South East Area Committee**

Update on Upgrading of Main Playground in Herbert Park

In recent years improvements works have been undertaken to the playgrounds in Herbert Park. These have included upgrading the existing junior playground at Pembroke Cottage and creating a new junior play area at the rear of the tennis courts.

In 2019 provision was made in the budget estimates to include for upgrading the main playground which included work to:

- Address flooding and poor drainage issues
- Improve accessibility and create hard stands for buggies/ scooters and bicycles
- Retain existing quality equipment but also introduce new play items age appropriate for the children using the playground
- Upgrade the safety surfacing within the playground.

The upgrading has been tendered and assessed with the winning company appointed. The design will be as per attached playground layout and will include a zip line for older children and a 'mud' kitchen' for toddlers.

It is anticipated that works will commence over the coming weeks and be completed before year end.

Michael Noonan
Senior Executive Park Superintendent

Herbert Park Playground, Ballsbridge, Co Dublin



7 Once Upon a time chair



5 Timber stepping stones



Low Mounding at Zip Line & Fairy Garden



11 Uslander Spider Lozo



2 no tree seats around existing mature trees.



9 HAGS PD7100-58C Zip Line

Key

- ① Secret Garden Timber Frame
- ② Wooden Wobbly Wall
- ③ Timber retaining circle & free play area
- ④ Timber balance beam
- ⑤ Timber stepping stones
- ⑥ Mud Kitchen
- ⑦ Once Upon a time chair
- ⑧ Fairy tale button stools
- ⑨ HAGS PD7100-58C Zip Line
- ⑩ HAGS Roy 8055868
- ⑪ Uslander Spider Lozo



Bird Boxes on existing Trees



Fairy Doors on existing Trees



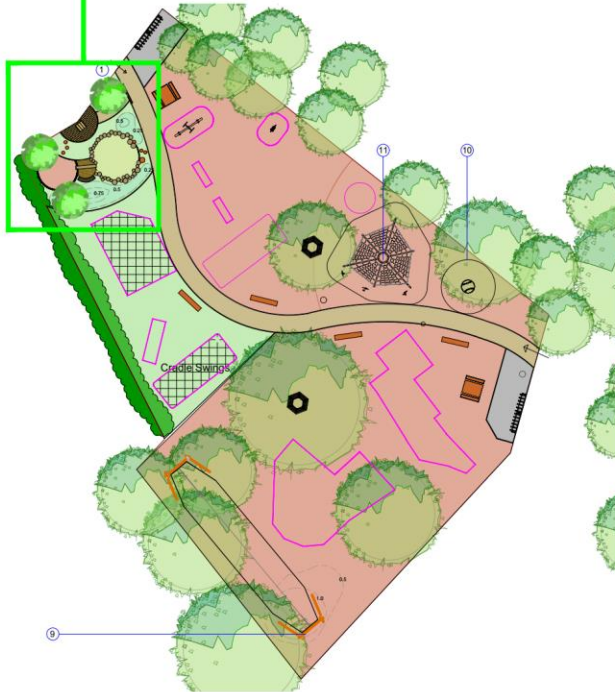
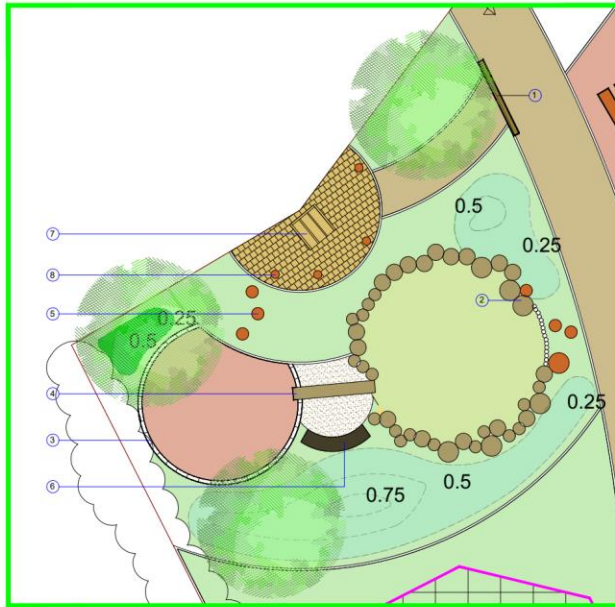
Cushionmat



Grass Mat



Play Sand



1 Secret Garden Timber Frame



3 Timber retaining circle & free play area



2 Wooden Wobbly Wall



6 Mud Kitchen



10 HAGS Roy 8055868



Blackwood Farm,
31 Carrowdore Road,
Greyabbey, BT22 2LU

Project Ref:

**Herbert Park
Play Area
Ballsbridge**

Date: 30/09/19

Drawing Number:
19/DH/PCS1/D1

Revision
1

Drawn By:
CL

Checked By:
RMCK

Scale:
1:100 @ A1

Note: Please check that this is the latest revision of this drawing before printing, issuing to clients or using on site



**To the Chairperson and Members of the
South East Area Committee**

Update on Upgrading of Main Playground in Harold's Cross Park

As part of our ongoing programme of playground upgrading and creating of new the playgrounds, city wide provision was made in the 2019 budget estimates to include for upgrading work to be carried out on the existing playground in Harold's Cross Park. Works to be considered included:

- Address playground surfacing and drainage issues
- Improve accessibility and create hard stands for buggies / scooters and bicycles
- Retain existing quality equipment but also introduce new play items age appropriate for the children using the playground
- Upgrade the safety surfacing within the playground

The playground has been tendered and the winning company appointed. The playground layout will include earth mounding and new play units as well as retaining existing play features of high play value.

It is anticipated that works will commence in early November and be completed before year end.

Michael Noonan
Senior Executive Park Superintendent



**The Chairperson and Members
South East Area Committee**

With reference to the proposed grant of a further licence of the crèche facility at Pearse Memorial Park, Windmill Road, Crumlin, Dublin 12.

By way of Licence dated 26th November 2015 the crèche facility at Pearse Memorial Park, Crumlin, Dublin 12, which is more particularly delineated on Map Index No. SM2011-0053 was let by Dublin City Council to Dublin 12 Childcare Consortium CLG for a period of 3 years from 14th April 2014 to 13th April 2017 subject to a licence fee of €100.00 per annum. The licence was subsequently renewed by licence dated 10th January 2018 for a further 3 years and it will expire on 13th April 2020. **The crèche facility was formerly in the South Central Area and is now in the South East Area.**

The South East Area Office has reported that a Part 8 application which was prepared and lodged by the Parks Department, in relation to the redevelopment of the Pearse Memorial Park (Application 2391/19 refers) includes provision for an extension to the existing crèche premises and additional outside space to the licenced area which currently adjoins the former parks depot.

The redevelopment will entail the demolition of the former parks depot building and the installation of a Hurling Wall on part of the site. The remainder of the depot site will be incorporated with the crèche to provide an extension to the existing premises and additional outside space, as shown indicatively on attached map number 201 on which the proposed extension is shown coloured pink and the additional outside area is coloured grey.

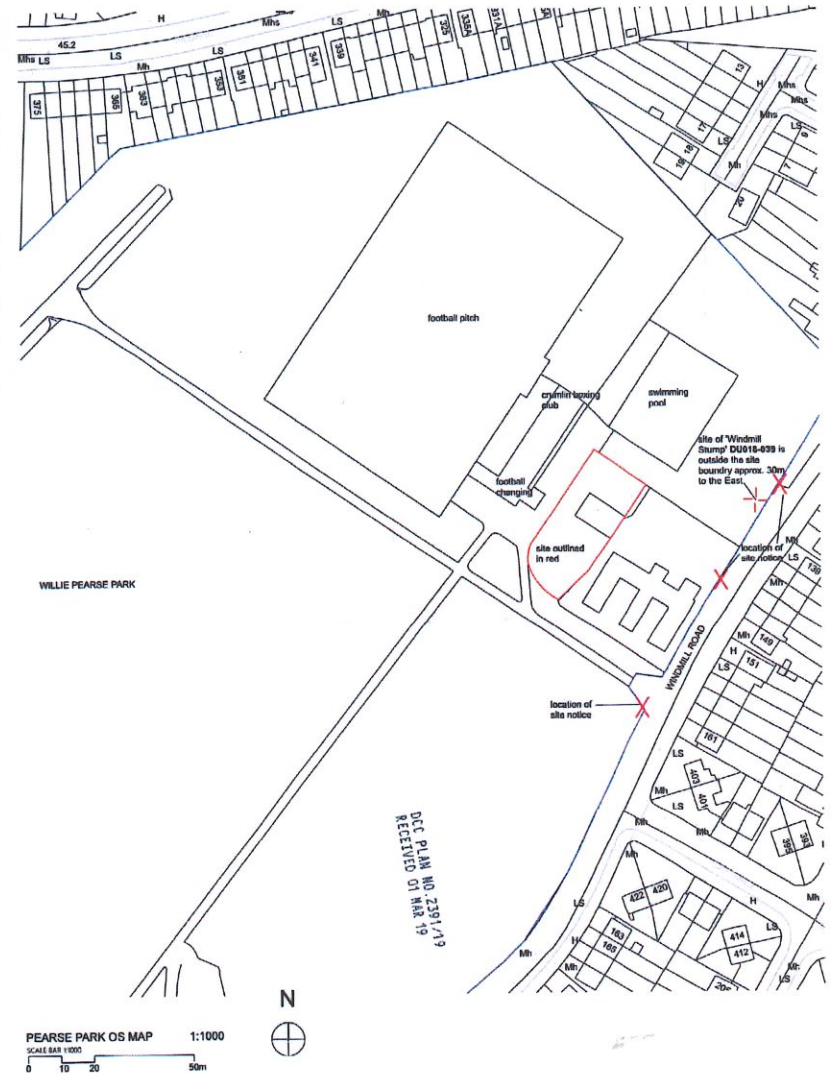
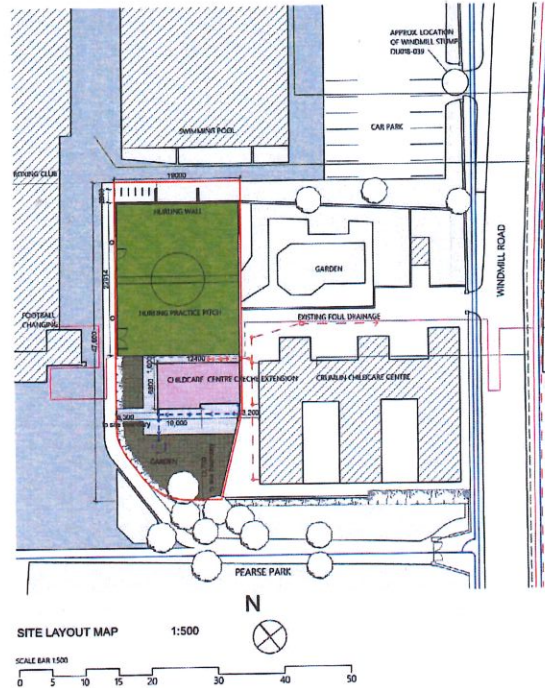
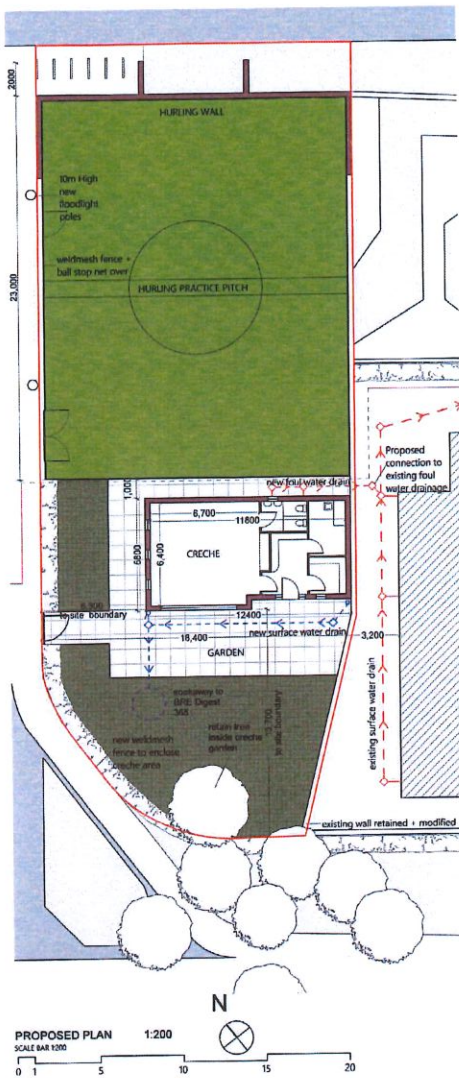
Dublin 12 Childcare Consortium CLG wish to avail of funding from POBAL to carry out the extension to the premises and the deadline for this application is November 2019. While the redevelopment work will not be completed in advance of the expiry of the existing agreement in April 2020 the South East Area Office has advised that certainty about the crèche's ongoing occupation once the existing agreement expires will be a key element of the funding application.

Accordingly, it is proposed to grant a new 5 year licence to Dublin 12 Childcare Consortium CLG on the expiry of the existing licence in April 2020 subject to the following terms and conditions.

1. That the licence shall be for a period of 5 years, commencing no later than 14th April 2020.
2. That the property is that shown outlined red on Map Index No. SM2011-0053 and shown coloured pink and grey on Map number 201. A new map showing the increased area will be prepared for inclusion the necessary legal documents.
3. That the licence shall be €100.00 per annum payable in advance provided that the premises is used solely as a crèche for no other purpose.

4. That the licensee shall sign a Deed of Renunciation.
5. That the property shall be used solely as a crèche and that in the event of it ceasing to be used for such purposes the licenced premises will revert to Dublin City Council.
6. The licensee shall obtain a high level of public liability insurance and employer's liability insurance (if applicable) which shall indemnify the Council against any and all claims arising from the licensee's use of the premises. The council will have an absolute right to set a minimum level of public liability and employer's liability insurance and review the figures on a yearly basis (the current minimum levels are €6.5 million and €13 million respectively).
7. That the licensee shall be responsible for the full internal and external repairs including maintenance of the outdoor play area.
8. That the licensee shall not erect or exhibit any sign, board, placard, poster or advertising matter or any flag or banner on or outside the facility without first obtaining the written consent of the licensor.
9. That the licensee shall not carry out any alterations to the premises without the express permission of the licensor in writing save for the proposed extension which is included in the Part 8 application reference 2391/19.
10. The licensee shall not sub-let, sub-divide, alienate or part with possession of the subject property without the prior and express consent in writing of Dublin City Council.
11. That each party shall be responsible for their own legal fees in the transaction.
12. That the licence will be subject to any other terms and conditions deemed appropriate by the Council's Law Agent.
13. The dates for the performance of any of the requirements of the licence Agreement may be amended at the absolute discretion of the Executive Manager.

Paul Clegg
Executive Manager



KEY	
LOCATION OF SITE NOTICE	
SITE BOUNDARY LINE	
OTHER LAND IN OWNERSHIP	
PROPOSED NEW STRUCTURE	
PROPOSED HURLING PITCH	
SURROUNDING BUILDINGS	

GAS SERVICE UNDERGROUND PIPELINE	
GAS INSERTED PIPELINE	
MV/LV UNDERGROUND POWERLINE DIVERTED	
MV/LV UNDERGROUND POWERLINE	
IRISH WATER	
PROPOSED FOUL DRAINAGE	
PROPOSED SURFACE DRAINAGE	
EXISTING FOUL DRAINAGE	

DORMAN
C1 THE STEREWORKS
POLY STREET
DUBLIN 1 IRELAND

TEL: 01 855 9932
FAX: 01 855 9939
EMAIL: info@dorman.ie
WEB: www.dorman.ie

REVISION

CONFIRM DIMS ON SITE BEFORE FABRICATION OFF SITE. REFER ANY DISCREPANCIES TO ARCHITECT. DRAWINGS ARE NOT TO BE SCALED. USE DIMENSIONS ONLY. THESE DRAWINGS ARE PROTECTED BY COPYRIGHT.

ISSUED FOR PART B			
PROJECT PROPOSED HURLING WALL, PEARSE MEMORIAL PARK, CRUMLIN, DUBLIN 12			JOB NO. 18 PRS
DRAWING PROPOSED PLANS			REVISION
DRAWN BY			PB
DRAWING NO. 201	SCALE 1:200, 1:500, 1:1000	DATE MAY 2018	

**To the Chairperson and Members of the
South East Area Committee**

Report of the Director of Services

Housing Projects and Local Area Improvements

Stannaway Court, Senior Citizens Complex

Insulation and upgrading works are well underway in the complex. Following the completion of the required gas works, insulation works have now been completed in blocks 1 and 2. Insulation works are approximately 90% complete on block 3 and have also commenced on block 4. New Fire safety hall doors have also been installed in blocks 1, 2 and 3. They will be rolled out to the block 4 in the next few weeks.

Raleigh Square - Tuath Housing Association

Tuath Housing are constructing 33 senior citizens' units at Raleigh Square in Crumlin. Works are progressing on these units but there has been some delays experienced. The contractor is claiming weather delays, supply chain issues and unforeseen design elements and the new completion date is October 2019. Tuath have advised they will be seeking nominations, from Housing Allocations, for the 33 units (28 x 1 bed, 5 x 2 bed) in September.

Rafters Lane – WALK Voluntary Housing Association (VHA)

WALK VHA, who provide a range of support for people with disabilities, are constructing 10 x 1 bed units and 1 x 5 bed communal unit at Rafters Lane in Drimnagh. The one bed units will accommodate senior citizens with general needs and the communal unit will accommodate older persons with intellectual challenges who are currently supported by WALK. The units are expected to be completed by the end of October. The Housing Allocations Section has started looking at potential nominations.

Armagh Road - FOLD Voluntary Housing Association (VHA)

We have been advised by FOLD VHA that the new senior citizens' units will be handed over on a phased basis by the contractor. The first block, consisting of 16 units, is expected to be completed by the end of October. FOLD have agreed to issue DCC with a reviewed construction programme when it is confirmed. They have also advised that following some design adjustments the complex will now provide 101 one bed units, an increase of 4 units from the original plan. The Housing Allocations Section, in collaboration with the Crumlin Area Office, are currently selecting applications for nomination for the first phase of the complex. While applicants will be selected from all Housing, Transfer and Priority lists, given the large number of units available there is a unique opportunity for older DCC tenants in underutilised accommodation to transfer to brand new, large, high quality dwellings located in a quiet and convenient area. If Councillors are aware of eligible DCC tenants who would be interested in these units they may pass on details to Áine Tobin in the Crumlin Area Office.

Mount Argus

DCC have agreed to acquire 13 units in block H of this development. The units acquired will include, 4 x 1 beds, 8 x 2 beds and 1 x 3 beds. The units are expected to be ready in Q4 of this year.

Grove Road CCTV

Following the receipt of a Garda report we have completed a Privacy Impact Assessment in relation to the installation of CCTV in the complex. A contractor has been appointed and is currently completing required Construction Regulations documentation. It is expected that works will commence the week beginning 7th October and should be completed within a few days.

Grand Canal Sub Group

The latest meeting of the Grand Canal Sub-committee was held on 4th September 2019. Letter was sent to Waterways Ireland on 12th September on foot of a motion from South East Area Committee seeking a meeting to propose a new format for interaction with Dublin City Council. In the meantime the canal sub-committee group will continue to meet. The next meeting of the Grand Canal Subcommittee will be held on 29th October 2019.

Portobello Harbour Square

An initial meeting will be held with City Architects Department in October to examine an outline brief for the proposed redesign of Portobello Harbour square, bearing in mind the new hotel development on the site which has recently commenced. Subsequent to that we will engage with local residents and businesses and other stakeholders, including Waterways Ireland, to agree a sustainable design for this important public space.

Rathgar Village Improvement Plan (VIP)

The redesign of Herzog Park is the final element of the Rathgar VIP to be undertaken. The Nature Play Area was officially opened by the Lord Mayor on 13th September 2018. Works to construct the Multi Use Games Area (MUGA) on the site of the bowling green are now complete and park landscaping has been carried out. The MUGA is rostered for use by local schools and will then be offered to other groups in the area. Works to re-align the bring centre are complete and it has reopened to the public in mid-August 2019. The redrawing of the park boundary and its treatment along with the re-alignment of the car park area is the final phase of the Herzog Park project. Roads Construction and Design are costing the car park works and it is proposed to carry out the works in late 2019 / early 2020, subject to funding being available.

Ranelagh Gardens Park

The installation of new park benches has now been completed. Works to light / enhance the main entrance archway will be considered for 2020 subject to funding.

Ringsend Irishtown Local Environment Improvement Plan (LEIP)

The Ringsend Irishtown Local Environment Improvement Plan (LEIP) was adopted at the June 2017 South East Area Committee meeting. It is now proposed to prepare planning applications under Part 8 of the Planning and Development Regulations, 2001, for the redesign of (1) Library Square and (2) Cambridge Road.

Library Square: (Mitchell & Associates) Meetings with internal stakeholders were held during September and October 2018. A meeting was held with local businesses to discuss parking / loading arrangements on 5th December 2018. A presentation was made to area councillors on 13th February 2019 and a preliminary draft design was brought to a public meeting for all stakeholders on Thursday 21st March 2019 at 7pm in the Ringsend Irishtown Community Centre (RICC). Following a period of consultation up to 19th April 2019, submissions were received and have been reviewed by the project team. A revised design is being drawn up and will be the subject of discussion with internal departments in October 2019. Following that Councillors will be briefed prior to holding a second public information meeting and commencing Part 8 process.

Cambridge Road: (Redscape Architects) An initial public workshop in relation to Cambridge Road was held on Thursday 30th August 2018 in the RICC on Thorncastle Street. Meetings with internal stakeholders took place in September and October and designs were drafted based on consultations which were brought to a second public workshop / meeting on 28th November 2018. Further information is required in relation to road design and drainage requirements for the proposal and it is planned to hold a further series of meetings with internal stakeholders before proceeding with the Part 8 planning application.

New Playground at Sean Moore Park

The playground in Sean Moore Park is now complete and is open to the public. The official opening was held on Friday 27th September 2019.

O'Carroll Villas

Housing Maintenance sought prices from 5 separate contractors for the proposed landscaping work at O'Carroll Villas and no response was received. Housing Maintenance are assessing their options and we are currently awaiting a response.

Mercer Street Play Area

Play area was completed – outside fence remains to be painted.

Cabbage Patch

We are working with a range of stakeholders regarding rejuvenating the Cabbage Patch. We held a public consultation earlier this year to ask local residents what they would like to see in the Cabbage Patch and among the priority items were the refurbishment of the football pitch and also the creation of a play area for children. We had some archaeological testing done in the Cabbage Patch during the summer and work on the pitch and the play area will be done in consultation with the City Archaeologist. Over the next quarter we hope to complete the spec. and issue a tender for the refurbishment of the new pitch. We have had a number of events in the Cabbage Patch over the Summer months which were reasonably well attended and currently our Community Section are planning an event for the Cabbage Patch for Halloween.

Markievicz House

Ground works have commenced and we continue to meet with residents regularly.

Community Development

Please find below a list of events taking place in October in the South East Area, organized or supported by the Community Development Team of the South East Area Office:

Tuesday, 1st October at 2.30pm – **“Guide to the Statues & Sculptures of Dublin” Talk**
Talk at Donnybrook Church of the Sacred Heart Parish Centre for Donnybrook Active Retirement Association.

Thursday, 3rd October at 12pm - **Autism Support Group Event** at the Hope Centre for **Social Inclusion Week.**

Thursday, 3rd October at 8pm – **“Beezie”** Play with Sheila Flitton at Milltown Parish Centre for Milltown ICA.

Saturday, 5th October from 12 - 4pm – **Bushy Park Market Children’s Activities** (face painter and children’s entertainer) at Bushy Park for **Social Inclusion Week.**

Sunday, 6th October at 11am – **The Rather Heritage Trail** Tour with historian, Ged Walsh. Meet at Herzog Park.

8 - 13 October – Ranelagh Arts Festival at various locations in Ranelagh Village.

Wednesday, 9th October from 6.30-9pm – Friends of Green Spaces Thank You Evening at Charlemont Court.

Thursday, 10th October at 8pm – "Beezie" Play with Sheila Flitton at Harold's Cross Pastoral Centre for Rathgar Ladies Club.

Friday, 11th October at 2.30pm – Afternoon Tea Dance with live music from Past Times at the Irish Charles Centre, Newbridge Avenue.

Sunday, 13th October at 12pm – Ranelagh Dog Show at Dartmouth Square. Registration from 10.30am.

Friday, 18th October at 7.30pm - Irishtown & Ringsend Villages:
Launch of Dockers & Demons III - The Seven Deadly Sins.

Saturday, 19th October from 12 - 4pm – Rathgar Children's Book Festival at Christ Church Rathgar, Rathgar Village.

Sunday October 20th 12noon – 4pm - RSA / Multiagency Fire, Emergency, Garda Day, Blue Cross / DSCPA / My Lovely Horse Rescue, Cabbage Patch Park.

Wednesday, 23rd October at 2.30pm – "Going Wild in Beggars Bush Court" Walk & Talk with RTÉ / TV3's Éanna Ní Lamhna. Meet at the community room, Beggars Bush Court

Halloween Bank Holiday Weekend

Thursday, 24th October

Dockers & Demons: The Wake of the Wicked Cabaret - The Chapel of Ease, Irishtown, 7.30 – 9.30pm.

Friday, 25th October

Sandymount Halloween Pumpkin Festival - Christchurch Hall, 5.00 – 7.00pm.

Dockers & Demons: The Wake of the Wicked Cabaret - The Chapel of Ease, Irishtown 7.30pm - 9.30pm.

Saturday, 26th October

Bushy Park Halloween Market at Bushy Park, 11am – 4pm.

Dockers & Demons: The Secret of the Seven Rooms - Art Installation Launch, Ringsend & Irishtown Community Centre, 3.00pm.

Dockers & Demons: Glutton Spud Fest at Whelan House / O'Rahilly House, 5.30pm.

Sunday, 27th October

Dockers & Demons: Sloth & Sustainability - An Educational Biodiversity Walk with Éanna Ní Lamhna - Irishtown Nature Reserve, 2.00pm, Meeting point TBC.

Greedy George Party – George Reynolds House, Irishtown, 5pm.

All Souls of Donnybrook - A Halloween costume parade, local entertainment and a remembrance finale for all "Souls of Donnybrook", 5.00pm.

This is a very poignant moment that allows us all remember those who have gone around the Feast of All Souls Day. Check out Donnybrook Tidy Towns's website, or Facebook page for more details.

Monday, 28th October

Installation of Our Lady of Lourdes Statue at O'Rahilly House grotto, 7.00pm.

Tuesday, 29th October

Dockers & Demons - The Demons Ball - Older Persons Halloween Tea Dance - CYMS Ringsend, 2 – 5pm.

“Going Wild in the Garden” talk with RTÉ / TV3's Éanna Ní Lamhna at the Carmelite Centre for the Golden Wonders Group, 2.30pm.

Halloween Tea Dance with live music from Past Times at Verschoyle Court community room, at 2.30pm.

Trip to the Hellfire Club for CLAY Youth Services, Crumlin (Members only), 5pm.

Formal Opening of the Ringsend & Irishtown Community Centre, 7pm.

Wednesday, 30th October

Halloween Tea Dance with live music from Past Times at St. Andrew's Resource Centre Day Care Centre, Pearse Street, 2pm.

Trip to the Hellfire Club for Bru Youth Services, Crumlin (Members only), 5pm.

Thursday, 31st October – Halloween Night

11 - 2pm – **Halloween Storytelling** with Wanda the Witch and face painting at Dolphin's Barn Library.

2 - 4pm – **Halloween Storytelling** with Wanda the Witch and face painting at Walkinstown Library.

1.30pm – **Halloween Festivities** with Model Train (1.30pm) and Zombie Run (3pm) at Brickfield Park.

3.30pm – **Zombie Run** at Sundrive Road.

12 - 3pm – **Halloween Festivities** with Haunted House, Bungee Basketball, DJ, Face Painting, Children's Entertainment and more at Clogher Road Sports Centre.

6 - 10pm – **Halloween Open Night** with various activities at Bru Crumlin.

5 - 10pm – **SCARE D8 - The Cabbage Patch Cauldron**

8pm – **Halloween Fun and Screening of Hocus Pocus**

Dockers & Demons III - The Circus of Sin Finale

3pm – **Halloween Party** - Spellman Centre.

5.30pm - Pre Circus Party - The Procession of the Seven Secrets – Halloween Parade leaving RICC at 6.45pm.

7.30pm – The Circus Of Sin - Dockers & Demons III Finale - Ringsend Park, off Cambridge Avenue.

Community Grants Scheme 2020

The annual Community Grants Scheme has been launched for 2020, the closing time / date for applications is **5.00pm on the 8th of November 2019**.

All Applications should be returned by the closing time / date directly to:

**Dublin City Council
Community and Social Development Section
Block 1, Floor 3
Civic Offices
Wood Quay
Dublin 8**

All enquiries regarding applications should be made by phone to **01 222 2148** or by email to **community@dublincity.ie**

Please note that applications for community grants should not be sent to either the Crumlin Area Office or the South East Area Office; any applications received at these locations will be returned to the applicant and not accepted.

Crumlin Swimming Pool

Crumlin Swimming Pool has re-opened, the hours of opening are as follows: **Mondays to Fridays** are either 9.00am – 6.00pm or 1.00pm to 9.00pm depending on private bookings. There are no open public sessions during these times. **Saturdays** are 10.00am – 1.45pm, this is an open public session. The first public session will be Saturday the 5th of October. **Sundays** – closed.

Christmas Tree Lighting Ceremony

Due to ongoing works at the Crumlin Village Garda Station, it will not be possible to use the space where barriers have been erected, so we have applied to hold the annual Christmas Tree Lighting Ceremony on the grounds of the church on **Wednesday the 4th of December at 5.00pm**.

Environmental Services

Public Realm Enhancements

Lamp posts painted in South East Area.

- Ballsbridge Avenue
- Bath Avenue / Gardens / Londonbridge Road
- Burlington Road
- Charleville Road
- Elm Park
- Herbert Place
- Kingsland Parade
- Richmond Hill

Graffiti

Ongoing removal of racist / political / offensive graffiti off public buildings and structures. Letters being issued to owners / occupiers to have graffiti removed from private property.

Abandoned Bike Removal

27 abandoned bikes removed.
Additional 15 tagged for removal.

Weed Control

Ongoing manual weed removal by Waste Management crews.

Events

Bram Stoker Festival, 25th, 26th, 27th and 28th October:

Various events

- St Patrick's Park
- Meeting House Square & the Ark
- Grand Canal Dock

Mark Pollock Run in the Dark, 13th November 2019.

Halloween 2019 in the South East

Halloween is a time of fun but also of concern. The safety and security of people can be put at risk by the irresponsible actions of others. The most obvious threat is the creation and location of bonfires but equally the irresponsible use of fireworks can cause injury and damage.

The South East Area Office will take a strategic approach to Halloween within the overall approach of council departments by putting in place measures that tackle the danger while at the same time organising community events where safe fun can be had on the night.

Removal and Reporting of Bonfire Material during Halloween 2019

City Council departments have deployed labouring crews and vehicles to facilitate the removal of bonfire material in the days leading up to and including Halloween. The services are being provided through the Housing, Parks, Waste Services and Development departments. The removal of bonfire material will be prioritised on risk. The following risks are examples of cases that will be prioritised:

- Material that poses a risk to safety and wellbeing of the public
- Material that poses a risk to critical public infrastructure
- Material that can become a focal point for major public order issues

Reporting of locations of stored bonfire materials can be made to either of the following:

- Call Dublin City Council **01 222 2222** or **1800 293949** (evenings and weekends)
- Report 'bonfire materials' online at <http://www.dublincity247.ie/>

In the South East Area we will follow a twin track approach to the removal of materials. Where materials are discovered they will be removed immediately or the site will be watched and materials will be removed when they have built up.

Parks will be responsible for all removal and bonfire prevention in major parks.

Housing and Public Domain will concentrate on housing complexes, green spaces within housing estates or flat complexes or immediately adjacent to them.

As in 2018 we will agree arrangements for support from the Gardaí, including the use of the Public Order Unit and meetings have taken place already.

Dublin City Council is promoting a safe and enjoyable Halloween for everyone this year. Bonfires are illegal and Dublin City Council is asking the public to report stockpiling of bonfire material as soon as possible so that it can be removed and avoid the risk of serious injury, damage to property and our environment over the Halloween period.

The council will carry out dozens of stockpiling raids removing bonfire material across the city between now and Halloween as part of its drive to promote a safe Halloween that all of the community can enjoy.

DCC is putting in place an extensive action plan for the 2019 Halloween period to ensure that we remove as much material as possible to help ensure a family friendly Halloween for all.

In 2018 Dublin City Council successfully removed 600 tonnes of bonfire materials during the Halloween period in response to over 600 reports of stockpiling from the public.

The excellent cooperation received from An Garda Síochána is essential to the success of these operations.

Dublin City Sport and Wellbeing Partnership (DCSWP)

Marathon Kids 2019

DCSWP is delighted to be re-engaging with the Marathon Kids programme for 2019 in partnership with South Dublin Council and Fingal County Council Local Sport Partnerships. Marathon Kids is an 8-week initiative encouraging and promoting the social, physical and mental benefits of physical activity for our children.

During the programme 5th and 6th year primary school students complete four running sessions each week inching them closer to completing their first marathon. The students will come together for the last marathon mile in a grand finale event held in Morton Stadium, Santry on 13 November 2019 making their achievement even more special.

DCSWP has had a very positive response to the programme; 15 schools in the city are currently participating in regular physical activity through the programme during school-time meaning over 500 of our children are getting out and active on a daily basis.

- The Marathon Kids programme continues in the South East Area in Star of the Sea, Sandymount throughout October / November.

The Daily Mile 2019

The Daily Mile is simple, free and gets children out of the classroom for fifteen minutes every day to run or jog, at their own pace, with their classmates, making them fitter, healthier, and in a better position to concentrate in the classroom. DCSWP is involved with this initiative in partnership with Athletics Ireland Officers and Frank Grealley, the Daily Mile ambassador from Athletics Ireland. The launch of The Daily Mile took place at the start of DCSWP's flagship event, Dublin Sportsfest on 23rd September 2019 and will be rolled out across schools in the area.

Halloween Highlights 2019

DCSWP Sports Co-funded and Community Officers are currently planning multi-sport Halloween camps to keep our young people happy, focussed and fit when school is out over the mid-term break. 2019 Zombie Fun Run will take place in Brickfield Park, Drimnagh on Halloween in partnership with DCC Community Officers. Details below:

- Brickfield Park Zombie run - 3pm start.
- Sundrive park Zombie run - 3.30pm start.

DCSWP Core Programmes October – November 2019

Below are details of highlight core programmes during the next period. DCSWP are currently in the planning period for the autumn / winter period. For full details please contact Dee O’Boyle in the DCSWP office at 222 5433 / sports@dublincity.ie

Couch to Parkrun (Core) Underactive Adults

The October / November Couch to Parkrun programme continues over the period and takes place on the grounds of St. Vincent’s Hospital:

- **Programme:** Couch to Parkrun Mount Merrion
Dates / Times: Tuesdays 4.30 – 5.30pm
Location: Mount Drummond Sheltered Housing Complex, Harold’s Cross

Forever Fit (Core) Older Adults

The Forever Fit programme is aimed at older adults and focuses on activities to improve balance, increase mobility, strength, and coordination and prevent falls. Details of Forever Fit programmes running in the South East Area during the next period are outlined below:

- **Programme:** Chair Fit, Mount Drummond
Dates / Times: Mondays 7pm – 8pm
Location: Mount Drummond Sheltered Housing Complex, Harold’s Cross
Participants: Older Adults –55+ years
- **Programme:** Chair Yoga, Woodstock, Ranelagh
Dates / Times: Tuesdays 3 – 4pm
Location: Woodstock Sheltered Housing Complex
Participants: Older Adults – 55+ years
- **Programme:** Chair Yoga Beech Hill
Dates / Times: Wednesdays 11.30am – 12pm
Location: Beech Hill Court, Donnybrook
Participants: Older Adults – 55+ years
- **Programme:** Dance For Life
Dates / Times: Tuesdays 11am – 12pm
Location: The Evergreen Centre, Terenure
Participants: Mixed Older Adults 55+ years

Youth Fit Youth at Risk 10 - 21 Years

Rugby, football and dance Youth Fit programmes continue in local schools in the area in following locations:

- CBS Westland Row, Rugby Programme will take every Wednesday in October.
- In partnership with Riccy’s Youth Services a six-week soccer programme is scheduled throughout October.
- Bike Safety Events will also take place over the next period.

Co-funded Programmes October – November 2019

Boxing Development Officer Update

The **Startbox** Initiative, a partnership between the Irish Amateur Boxing Association (IABA) and Dublin City Sport & Wellbeing Partnership will be recommencing during the school year.

The programme is an ideal way for young people (10 – 17 years) to first engage with amateur boxing, Ireland’s most successful Olympic sport. It is delivered by our five dedicated IABA / DCSWP Development Officers via local schools (primary & transition year level) in communities across the Dublin city area. Approximately 2,000 young people take part each year in the programme.

The programme is structured into Bronze (non-contact), Silver and Gold phases. The first phase focuses on general strength and fitness, method and technique. The Silver Programme consists of higher intensity sessions and limited contact and the Gold phase takes it on to another level again.

The DCSWP / Leinster Rugby Development Officer is currently engaging with schools across the South East Area in relation to the Bronze Boxing Programme.

Cricket Development Officer Update

The Cricket Development Officer will be liaising with local officers to deliver Schoolyard Cricket Sessions in from mid-October - November in the following schools in the area:

Star of the Sea	Wednesday – 1.00 – 2.30pm	Sandymount
Cricket – Rathgar NS	Tuesday 11am – 12.30pm	Rathgar
Cricket – St. Matthews NS	Thursday 1.00 – 2.30pm	Sandymount
Cricket – Ranelagh MDS	Friday 1.00 – 2.30pm	Ranelagh

Football Development Officer Update

Football Programmes in October / November will continue to target schools in the local area. Other initiatives will include football racial awareness programmes, grassroots programmes and DCC specific initiative and football sessions for females in local clubs.

Rowing Development Officer Update

The Get Going Get Rowing Programme continues in schools across the city over the next period including schools in the South East Area.

Islandbridge Municipal Rowing Centre will host the delivery of on the water session be for secondary school students across the city on Saturday 19 October.

The Get Going Get Rowing School Indoor Rowing Blitz will take place on Thursday 24th October in Trinity College Dublin.

Women’s Citywide Football Development Officer Update

DCSWP’s Women’s FAI Development Officers work on a north / south basis delivering football programmes aimed at encouraging and facilitating female participation in football. School coaching sessions and social inclusion drop-in sessions are currently in the planning process across the South East Area. A full update will be included in the next report.

CONTACT DETAILS

Shauna McIntyre, Dublin City Sport & Wellbeing Partnership Manager:

shauna.mcintyre@dublincity.ie

Aideen O’Connor, Dublin City Sport & Wellbeing Partnership Programmes & Services

Development Manager: aideen.oconnor@dublincity.ie

Colin Sharkey, Senior Staff Officer, Dublin City Sport & Wellbeing Partnership:

colin.sharkey@dublincity.ie

Michelle Malone, Sport Officer: michelle.malone@dublincity.ie

Maz Reilly, Sport Officer: marielouise.reilly@dublincity.ie

Jamie Dowling, Centre Manager, Sports & Fitness Markievicz & Irishtown:

jamie.dowling@dublincity.ie

Football: jonathan.tormey@fai.ie

Rowing: mary.moloney@rowingireland.ie

Rugby: ken.knaggs@leinsterrugby.ie

Women's Rugby: larissa.muldoon@leinsterrugby.ie

Boxing: Michael_carruth@ymail.com

Cricket: fintan.mcallister@cricketleinster.ie

Report by Dee O'Boyle, DCSWP: dee.oboyle@dublincity.ie

Mary Taylor

Director of Services

Dated: 9th October 2019

Q.1 Councillor Dermot Lacey

To ask the Manager why there has been no progress since residents' emails from 2017 regarding a promised replacement metal road nameplate for Ballsbridge Avenue at junction of Herbert Cottages. The current nameplate is illegible for three years and as it's a one way road from Beattys Avenue it's a dangerous situation as cars are reversing around the area to find Ballsbridge Avenue.

Q.2 Councillor Dermot Lacey

To ask the Manager if he can arrange to have the windows at *details supplied examined for replacement as Dublin City Council recently installed new windows in two of the adjoining houses all built at the same time.

Q.3 Councillor Chris Andrews

Can the Manager arrange to have the weeds and gullies scraped and tidied up in Mount Drummond Court and give an indication when this will be done?

Q.4 Councillor Chris Andrews

Can the Manager arrange to have speed limits displayed all on Sean Moore Road past Poolbeg Quay and camera / sensors installed with speed displayed and have the yellow boxes at Sean Moore roundabout, to stop trucks driving into them which stops access onto roundabout?

Q.5 Councillor Dermot Lacey

To ask the Manager when the public lighting improvement programme will be extended to Herbert Park Road?

Q.6 Councillor Dermot Lacey

To ask the Manager if he can confirm when *details supplied will be allocated a place in the allotments in Herbert Park and where she is placed on a list.

Q.7 Councillor Chris Andrews

Can the Manager arrange to have the raised median in Mount Drummond Avenue repainted in yellow and black in order to make it safer for motorists?

Q.8 Councillor Chris Andrews

Can the Manager have the branches at the base of the trees in the raised median on Mount Drummond Avenue as seen in photo attached cut back in the interest of road user safety and pedestrians?

Q.9 Councillor Chris Andrews

Can the Manager outline how and why levies are collected off developers of sites under construction and can a portion of the development levy be ring fenced from the levy for planning application 2808/19 Bartra / Boston Sidings development off Macken Street to fix the drainage problems that residents on Macken Street have?

Q.10 Councillor Chris Andrews

Can the Manager arrange to have flexi wands installed on the 24 hour cycle lane from 2 Camden Street Lower to 50 Richmond Street South to protect cyclists on this particularly busy route?

Q.11 Councillor Chris Andrews

Can the Manager outline where the Barrow Street Redesign from 2012 which went through a Part 8 process is and is it possible for Councillors and public to review this plan?

Q.12 Councillor Paddy McCartan

To ask the Manager to have the overgrowth of ivy trimmed back from the wall adjoining Beech Hill, overlooking 14 Simmonscourt Terrace, Donnybrook.

Q.13 Councillor Paddy McCartan

To have the graffiti removed from the Dodder Bridge, adjacent to Marian College.

Q.14 Councillor Paddy McCartan

To have the graffiti removed from the flood gate adjoining Marian College.

Q.15 Councillor Paddy McCartan

To ask the Manager to have the traffic island at the entrance to Wellington Road opposite Pembroke Park cleaned up as it is in a state of dereliction.

Q.16 Councillor Paddy McCartan

To ask the Manager to respond to the following suggestions from a constituent re Herbert Park, who writes:

"I would recommend that both the north and east ends of the duck pond be cleared on a regular basis. The east end is full of small twigs and bits of rubbish. A rake with a long handle dragged across the surface would remedy this.

The north end of the duck pond is covered in sludge and algae. It has been like this for years. It precludes the ducks and swan from using this part of the pond. Again, it would not take much work to clean this up and would make a huge difference.

When the pond was first created, it was for the Great Exhibition. It was not made as a duck pond. It is now signposted as 'duck pond' which is great, as it adds to the wildlife of the park and to the general enjoyment of the public, who come to see the ducks / swans.

However, reading through the development plan, I notice that the installation of two footbridges is being considered. This is not a good idea and should be abandoned. Remember, it is a pond to accommodate ducks / swans for the enjoyment of the public.

Cast your mind back the Blessington Street Park, known as The Basin, a hidden gem in Dublin City. In 1991 plans were rejected by the local community for an elaborate water garden designed by a German. One of the reasons this plan was rejected was due to the restriction of the landing area for swans and birds. Like aircraft, swans, as well as ducks require a certain clear and unobstructed space to both to take-off and land.

If two ornamental bridges are constructed, it will greatly hamper the movement of the ducks and swan. The swan will not have the necessary take-off and landing space.

I think that the public who take many photographs and videos of the swan, and especially the children, would much prefer to have swans and ducks than two ornamental bridges!

The report mentions the small shelter on the mound, now demolished. It mentions the

need for restoration. This was used by individuals for unsocial behaviour who eventually burned it down. If it is restored, the same will happen especially when the gates are unlocked. This area looks nice unobstructed by a shelter.

Cycling in the park continues, and acts as a deterrent to elderly people walking in the park. Bikes are silent and you don't either hear or see them approaching from the rear. Some travel at great speed. If a pedestrian takes a step sideways, an approaching bike could cause a very serious accident.

There are about 3 signs up. But I would suggest that a sign be put up at each entrance to the park, on both sides of the road.

I would suggest Mr. Tom Boland, known as the Weather Man, who frequented Herbert Park for twenty-five years, sitting on the same park seat, be commemorated by a plaque attached to this seat. He was known and loved by all. He died on 8 February 2018, aged 77 years.

A great job has been done on the park with replanting of trees. The area beside the north side of the pond planted with wild meadow was quite spectacular in the autumn. I think an area containing bluebells should be considered.

Your attentive and diligent Park Ranger keeps a watchful eye on the park."

Q.17 Councillor Paddy McCartan

To ask the Manager to respond to the specific issues raised by a business owner in Donnybrook, who writes:

Summary of problem

Donnybrook village has suffered and is still suffering extremely badly post the economic crash, with 2 banks and several more business houses closing within the last 4 years. Kiely's pub has closed down. The remaining business owners are struggling to attract customers and business and into the area.

There is not enough (*temporary*) *car parking* in Donnybrook village. Business owners and traders at the Bective end of the village in particular, are encountering this complaint on a daily basis from thousands of drivers on ***the leading road*** artery into the city from the south side of Dublin.

However, there is ***an existing*** 'pay and display' car park that very few drivers even know exists. It is therefore totally underused because most drivers do not know where it is located. This car park is situated behind three (3) access routes, of Mulberry Lane, Morehampton Road and Victoria Avenue respectively. The car park is ***already*** painted with white lines, double yellow lines, three parking signs and a parking meter to accommodate 23 (twenty three) cars / vans.

Types of vehicles

This car park can facilitate two (2) 'types' of vehicles.

Delivery and collection vans and cars could use the car park during the day to service restaurants, doctors' surgeries, domestic houses, and customer collections. Using the facility would mean that vans or cars do not *have to* park or double-park on the main Morehampton Road.

This will greatly ease traffic congestion, and increase road safety for all road users and pedestrians.

Local businesses

More business and property owners **will encourage** customers / clients to drive into Donnybrook and collect their goods, if they knew they could *get a safe parking place* for the duration of their visit to the village. At present there are **no directional or informational road signs** in any part of Donnybrook village highlighting where this car park is. There is one (1) small 'P' sign on a lamp post on Mulberry Lane.

Solution

Six (6) simple 'P' signs with an additional three (3) directional pencil signs, strategically located on **existing or new lamppost** to guide and show visitors exactly where the car park is located.

I trust this information helps you.

Street Light on Mulberry Lane

A pole was erected outside Ernie's Restaurant *many* years ago, wired, but no street light was added! The lane when dark, and can be dangerous when cars pass in the dark. Could a street light be placed on top of it?

Q.18 Councillor Paddy McCartan

To ask the Manager to respond to the issues raised by a Sandymount resident, who writes:

I am a native to Sandymount and would like to voice my disgust at the terrible state of the strand for the last two weeks. It absolutely stinks and is covered in sewage which is not being carried out by the tide and clings to the steps going down to the strand making them treacherous. We're used to hearing after every shower of rain that there's been an overflow from the plant at Poolbeg but there's been no serious rain lately and yet the strand is unusable.

Q.19 Councillor Dermot Lacey

To ask the Manager if he will arrange for the works as requested below to be carried out as a matter of urgency:

I'm afraid I have another issue for Roads Division which requires action. Any delay is more likely than not to involve an incident that may well leave DCC liable for damage to cars or even injury.

Last Thursday my attention was drawn to subsidence hole in the Terrace Road outside number 12. I reported it to the DCC South East Area and the man I spoke to realised the urgency and said he would report to Roads Section for action see photos taken on Thursday 26th.

No action taken yet; over the weekend the hole has widened as I had predicted and attached are photos taken today. Also there was an incident when a man was crossing over to his side of the Terrace caught his foot in the hole but luckily managed to stop himself falling. I measured the depth of the hole with a measuring tape and it is just over 1 foot.

Bearing in mind my previous experiences with Roads Division, there is little point in me following up with them, so maybe you might get some action from them before another incident occurs.

There are further holes outside No. 37 and beside the front wall of No. 51 Morehampton Road – not as deep but much wider.

Q.20 Councillor Chris Andrews

Can the Manager arrange to have the blocked drain at entrance to Pearse House between block A and S, as shown in attached photo, as when it rains it blocks up and floods the entrance?

Q.21 Councillor Deirdre Conroy

To ask the Manager about the new parking spaces on Lower Kimmage Road, the photograph below shows on-street parking added at the end of the Marlet development next to the bus stop. Local Resident Association LOKRA question how it is deemed safe to pull in and out to park here, opposite the junction of Kenilworth Park and within close proximity to the bus stop.

In addition, LOKRA are conscious of the NTA Bus Connects proposals which will close city bound vehicular exit from Lower Kimmage Road. This means that such on street parked cars will have to either make an extremely sharp turn out to exit up Kenilworth Park if heading towards town, Terenure, Churchtown etc., or continue the short distance northwards and up Casimir Road, a road so narrow that cars must pull in to allow another to progress and then pull back out again to continue the journey.

Q.22 Councillor Deirdre Conroy

To ask the Manager for the (a) provision of bicycle parking along Ravensdale Park as there is no bike parking outside or in the surrounds of the retail parade. This is a particular issue for the newly opened 4 Provinces public house and microbrewery, as its customers are mainly cyclists. The business provides free function room for community meetings.

(b) the business owner has also requested if a sign for the small businesses could be erected at the main road entrance to indicate their location.

As the NTA proposes to commence a bus gate (to prevent cars having access to Kimmage Road Lower) at the junction of Ravensdale Park, there will be excessive signage at this point.

Q.23 Councillor Deirdre Conroy

To ask the Manager for works to be carried out on the surface of Garville Lane and a gate that is a danger to local residents [details below]. Photographs were provided by the enquirer. The email was forwarded to Road Maintenance already.

Q.24 Councillor Deirdre Conroy

To ask the Manager – though this is not in my ward [South East Inner City] – about the ownership of the Methodist Church St. Kevin's Road, Portobello, Dublin 8 [former Social Welfare Office] and whether it can be purchased and redeveloped for residential use.

Q.25 Councillor Deirdre Conroy

To ask the Manager about safe truck access to a scrapyard on Price's Lane – also not in my ward [Pembroke]. I was requested to do a site visit and pointed out that the cars parked along Price's Lane do not provide safe space for access out of the lane by the commercial trucks. The enquirer also requested that a proper footpath would replace parking for the purpose of local residents walking the lane.

Q.26 Councillor Deirdre Conroy

To ask the Manager if a cycle lane barrier can be erected on Richmond Street South and Camden Street Upper to prevent illegal parking causing danger to cyclists.

Q.27 Councillor Chris Andrews

Can the Manager arrange to have a fob key system or intercom system put in place at entrance to Cambridge Court senior citizen development in the interest of safety?

Q.28 Councillor Chris Andrews

Can the Manager state how many Part V homes is it projected will be allocated in 2019 2020 and 2021 by Housing Allocations for the Dublin Bay South Area and when will they be allocated?

Q.29 Councillor Tara Deacy

There are a number of business premises on Ravensdale Park, (4 Provinces, Heaven Hair and Beauty, Crumbles Deli) there is also a busy industrial estate adjacent to this road. Businesses in the community have requested the installations of a bike rack on Ravensdale Park, which would in turn encourage less car use and in light of Bus Connects plans this would be a benefit to the area.

Q.30 Councillor Tara Deacy

The residents using both Lavarna and Lorcan O'Toole Parks have asked that the grass is cut much shorter, the grass is not being topped leaving grass too long and children are unable to play. Can this be addressed?

Q.31 Councillor Tara Deacy

The residents of Garville Lane, Rathgar are experiencing very low levels of maintenance of the lane, safety hazards, and very poor traffic management and parking.

A resident has already sent correspondence relating to this of which I have attached. Action needs to be taken as soon as possible on this lane as it is a health and safety issue for residents and many young families living on this lane. Can the staff of DCC meet with residents to discuss a maintenance plan for the lane as well as the parking issues? Can I get some clarification in terms of when this work will commence.

Q.32 Councillor Tara Deacy

There are two schools currently in accommodation at the former Greyhound Stadium in Harold's Cross, the population of which will rise rapidly in coming years. There is a busy Montessori a few houses up with morning and afternoon sessions. St. Clare's Primary School is also metres away, and a new apartment complex under construction on the stadium side of the road. This road is very busy and residents have highlighted their concerns about the safety of their children, while trying to cross and the speed at which traffic goes on this road.

As a traffic calming measure can a pedestrian crossing and pedestrian access to the park on the Harold's Cross side be provided?

Q.33 Councillor Tara Deacy

The residents of *details supplied have had their problems with mould resolved after a considerable wait and have been waiting on the external insulation to be done. They have been told they were next in line after Mount Tallant Road in early summer, but no action has been taken to date. The condensation is starting to appear again and the residents do not wish to be back in the same place in terms

of mould. I have been in their home and I can support how chronic the mould problem was for this family. When will their home be externally insulated?

Q.34 Councillor Tara Deacy

As the Marlet Property group prepares the first of its residential blocks for occupation next month, residents have expressed their urgent concerns regarding safety and adherence to Dublin City Council zoning designation on Lower Kimmage Road as a result. On-street parking has been added at the end of the development next to the bus stop on Lower Kimmage Road. Existing double yellow lines are still visible painted on the road. I am seeking clarification regarding for whom are these car parking spaces intended- general public, and if so are they to be disk parking, metred etc.? Are they in addition to the (181approx.) underground parking allocated to the apartments, and if so are they allocated to specific apartments, and if so which?

Q.35 Councillor Anne Feeney

To ask the Manager to outline what are the plans for the recycling area in Terenure Car Park. Given the recent plans to camouflage this area are not now an option, what is proposed instead? The area is unsightly and regularly has broken glass on the pedestrian road side which is a safety hazard and could leave the council exposed to injury claims. Also, bags of bottles and clothes are regularly left alongside the recycling containers and there is an issue with people using the bottle bank late into the night which is prohibited given the nuisance for local residents. Would it be possible to move the recycling containers to the back of the car park?

Q.36 Councillor Anne Feeney

To ask the Manager to consider installing a pedestrian crossing / traffic lights at Greenlea Road shops to facilitate safe crossing for children coming from school and also the many older residents who use the shops, medical centre, post office, etc. on a regular basis. This road is a very busy link road between Fortfield and Terenure Road West and while there are ramps along the road, speed of traffic on the road is still an issue for people trying to get across the road quickly. Also, the density of parking obscures the view of those trying to cross the road.

Q.37 Councillor Anne Feeney

To ask the Manager, that following the very successful trial kerbside clean-up by Waste Management in a number of areas (e.g. Larkfield, Ashdale, Eaton Square, Mount Tallant) last May, are there plans to extend this to repeat this and extend it to other areas in the Kimmage Rathmines LEA over the coming months? The trial involved advising residents by flyer that a thorough kerbside clean-up would be carried out on a specific date and time-span and residents should park their cars elsewhere to allow a 'deep clean' to be carried out. This type of street cleaning is carried out on a regular (e.g. quarterly / twice yearly) basis in other European cities and is very effective for local areas and very efficient for the local authorities.

Q.38 Councillor Anne Feeney

To ask the Manager to arrange to have the trees on Westfield Road, Harold's Cross pruned and where some of the trees are in bad condition to treat them, remove them and replace them.

Q.39 Councillor Anne Feeney

Given the significant amount of building almost completed by Marlet on Lower Kimmage Road, to ask the Manager to ensure that the Poddle River culverts are clear from building and other debris, to ensure no flooding threat over the coming days and weeks.

- Q.40 Councillor Kevin Donoghue**
To ask the Manager when will work commence to clean up Bremen Avenue and in particular, clear the planters facing *details supplied.
- Q.41 Councillor Kevin Donoghue**
To ask the Manager if there could be increased cleaning of Barrow Street and the connecting streets in the South Lotts neighbourhood. There was a slight improvement over the summer period, but it has again slipped back due to the construction work in the area.
- Q.42 Councillor Kevin Donoghue**
To ask the Manager if there could be cleaning of Erne Terrace Upper and Lower.
- Q.43 Councillor Kevin Donoghue**
To ask the Manager if the tree at *details supplied could be pruned. The tree is obstructing the street light.
- Q.44 Councillor Kevin Donoghue**
To ask the Manager when the empty house on Isolda Road will be brought back into use and for an explanation as to the delay up to now.
- Q.45 Councillor Kevin Donoghue**
To ask the Manager when repairs to the footpath on Bath Avenue will be carried out, as it has become hazardous.
- Q.46 Councillor Kevin Donoghue**
To ask the Manager if an investigation will be carried out into the sink hole at Havelock Square.
- Q.47 Councillor Mannix Flynn**
Can the Manager examine the ongoing issues of illegal parking and loading and unloading of trucks on Grantham Street? See letters attached (details supplied).
- Q.48 Councillor Mannix Flynn**
Can the Manager urgently address the issues of antisocial behaviour and criminal activity and racially abusive graffiti and the many other issues that are taking place at Glovers Court flat complex? Many of the residents here feel intimidated and terrified with gangs of youths rampaging in the blocks of flats, targeting people with fireworks. Recently the new hotel (Merlin) has been attacked nightly with fireworks and stones. These group of youths are intent on injuring people in the flats and the patrons of the hotel and any other passersby that happen to encounter this gang.
- I have supplied DCC management with photographic and video evidence relating to this issue.
- Q.49 Councillor Mannix Flynn**
Can the Manager issue a report regarding the use of the public lavatory at Kevin Street? This Victorian public facility has been lying idle for over a decade and it's now becoming a site of antisocial activity and dumping. This structure is part of the heritage of the city and is a protected structure and should not be left to simply dilapidate.
- Q.50 Councillor Mannix Flynn**
Can the Manager install Neighbourhood Watch signs and Garda Neighbourhood Watch signs in and around Saint Kevin's Parade to deter break-ins? In this area there have been a number of attempted break-ins in recent times and residents are very

fearful particularly the elderly in the area. Also, could the Manager examine the possibility of CCTV cameras that would monitor the area?

Q.51 Councillor Mannix Flynn

Can the Manager initiate the removal of the two pillars in Patrick's Close? These two pillars are in danger of collapse due to the constant impact of buses and heavy duty vehicles that hit them as they enter into the close. Recently the top part of one of these pillars collapsed as a result of a bus impact recently. The entrance to this street is too narrow due to the pillars which were put there in recent years and is becoming extremely dangerous for pedestrians.

Q.52 Councillor Mannix Flynn

Can the Manager investigate the ongoing noise issues that are emanating from the massive building site and Charlemont Street / Tom Kelly Road? The impact of this noise and the building work on the surrounding community over the past number of months is detrimental to their health. Many people have complained to me of the builders simply ignoring the residents' concerns. There is an elderly community here who are trying to live just metres from one of the biggest building sites in the city. Dust and dirt and noise is their daily and nightly issue for these Dublin City Council residents.

Q.53 Councillor Mannix Flynn

Can the Manager initiate the procedure for an order of protected structure on Kevin Street College of Technology and its surrounding buildings?

Q.54 Councillor Mannix Flynn

Can the Manager initiate a full clean-up of Liberty Lane off Camden Street? This iconic laneway is now destroyed with graffiti and spray paint many of the citizens and residents who live and work in the area will not enter into the street or walk down it. It is constantly being attacked with gangs of individuals loitering and spray-painting in the area.

Q.55 Councillor Mannix Flynn

Can the Manager issue a full update as to the status on the order of protected structure for the RTE campus and the buildings that was agreed at this meeting sometime back?

Q.56 Councillor Mannix Flynn

Can the Manager issue an update as to how Dublin City Council and Health Services Executive (HSE) are dealing with a huge rat infestation in the South East Area of the city? This report to include what protocols and service level of agreements are in place with the HSE and private operators to deal with this issue.

Q.57 Councillor Claire Byrne

To ask the Area Manager how often street cleaning takes place in the Portobello / St. Kevin's area, in particular the side streets off the main streets, and can the Manager please review and increase the street cleaning of Oakfield Place and St. Kevin's Parade in particular.

Q.58 Councillor Claire Byrne

To ask the Area Manager can he please take measures to address the issue of illegal parking of tourist coaches on Pembroke Street Lower? Tourist coaches are regularly parking here illegally to allow passengers to hop off to take photos and are blocking access to the Dublin Bike stands in the process.

Q.59 Councillor Claire Byrne

To ask the Area Manager if he can review the street cleaning of Cows Lane. The machines used here are very loud and are used for long periods of time very early in the morning, causing disturbance to their local residents. Can the Manager please outline what can be done to address this while not compromising on the cleaning of the street and the surrounding area?

Q.60 Councillor Claire Byrne

To ask the Area Manager can he please provide an update on the delivery of the Fitzwilliam Street cycle route? Can the Manager also clarify whether recent works carried out on the road are permanent works or temporary?

Q.61 Councillor Claire Byrne

To ask the Area Manager can he please clarify who is responsible for the maintenance of Lazer Lane, Grand Canal Dock, and can he please liaise with the relevant organisations to arrange to have the manholes on Lazer Lane mended as a matter of urgency. The constant sound of steel banging as traffic passes over them is causing constant noise pollution and distress for the neighbouring residents.

Q.62 Councillor Claire Byrne

To ask the Area Manager can he please review the housing priority of *details supplied on the grounds of her son's medical condition, for which the applicant has significant written support.

Q.63 Councillor Claire Byrne

To ask the Area Manager what work is taking place on the basketball court in Ringsend Park, why has fencing been installed and when will these works be completed?

Q.64 Councillor Claire Byrne

To ask the Area Manager can he please confirm whether planning permission was granted for a nightclub in the hotel currently under construction at Portobello Harbour? If so can he please provide details of this, including any relevant conditions attached to the planning agreement?

Q.65 Councillor Claire Byrne

To ask the Area Manager can he please increase the frequency of cleaning of Pearse Grove and the surrounding lane ways? Can he also arrange for this area to be weeded as soon as possible?

Q.66 Councillor Pat Dunne

Can the Area Manager provide a detailed report on the transfer of ownership of the Rosary Hall in Harold's Cross to DCC? Can the report also list the required works needed to bring the hall up to the standards required for full community use and the expected timeframe for the completion of these works?

Q.67 Councillor Pat Dunne

The Area Manager will be aware that Parks agreed last year to remove a number of trees in Brickfield Park that were causing a nuisance to residents on Mourne Road. Many of these were in close clusters and overhanging into residents gardens. He would be further aware that some members of the general public objected to the removal of these trees, however in the past month many of them have now been removed.

However the resident in (details supplied) has complained to me that the tree adjacent to her back garden still has not been removed. She has written a very passionate letter

In the letter she explains how ill her husband is and the fact that he cannot enjoy some comfort in his own back garden as a result of the imposing nature of this tree,

In the circumstances I would be much obliged if you could arrange to remove this tree.

Q.68 Councillor Pat Dunne

Can the Area Manager make arrangements to facilitate the following request (details supplied)?

Q.69 Councillor Pat Dunne

Can the Area Manager provide a report on the development in Willie Pearse Park for the provision of a hurling pitch and wall together with an extension to the existing crèche and a timeframe for the commencement and completion of this project?

Q.70 Councillor Pat Dunne

Can the Area Manager ask our Parks Section to examine and carry out the necessary repairs to the railings along the small pocket park at the entrance to Poddle Close in Kimmage? Residents complain that a portion of this railings is bent and sticking out in a manner that could cause injury to pedestrians and wheelchair users.

Q.71 Councillor Pat Dunne

Can the Area Manager ask our Derelict Sites Section to visit the vacant site at (details supplied) to determine if it can be placed on the Derelict Sites Register?

Q.72 Councillor Pat Byrne

Can the Area Manager ask our Derelict Sites Section to visit the vacant site at (details supplied) to determine if it can be placed on the Derelict site register?

Q.73 Councillor Pat Dunne

Can the Area Manager ask our Roads and Traffic Section to install double yellow lines on one side of the entrance into (details supplied)? Residents living in the cul-de-sac complain that cars parked on both sides makes it difficult for emergency services and bin trucks to gain entrance and it also can cause difficulty for motorists exiting the estate.

Q.74 Councillor Pat Dunne

Can the Area Manager provide a report on the measures that he is taking to deal with the problem of dog fouling on our footpaths and in our parks and green spaces particularly in the Crumlin area?

Q.75 Councillor Patrick Costello

To ask the Manager to install "The Lovehoop" cycle hoops on Augier Street - these are heart shaped cycle hoops that attach to existing poles to provide safer and better cycle parking. These unique designed hoops would highlight the connection with the relics of St. Valentine which are in White Friar Street Church. See picture for example.

Q.76 Councillor Patrick Costello

To ask the Manager to install bike parking around Ravensdale Park and Cashel Road, local business have asked for this to support customers.

Q.77 Councillor Patrick Costello

To ask the Manager to provide an update on my previous request to extend the operating hours of the cycle lane in Rathmines.

- Q.78 Councillor Patrick Costello**
To ask the Manager for an update on Question 63 from the September meeting in relation to resurfacing the ramps at Garville Avenue.
- Q.79 Councillor Patrick Costello**
To ask the Manager to carry out much need maintenance work on Garville Lane which residents have been seeking for some time.
- Q.80 Councillor Hazel Chu**
To ask the Manager to look into the possibilities of reverse vending recycling bottle machines to be located in the South East Area. These machines are popular in Germany and involve providing users a nominal voucher for the store(s) the bank is based. The idea is to work with the likes of supermarkets and Tidy Towns in the area to trial the machines. Whereby DCC collects the returns. This initiative is being trialled by a Monaghan town this week.
- Q.81 Councillor Hazel Chu**
To ask the Manager in light of the recent weather with heavy rainfall can we alert the requisite engineering department to look at areas that are prone to flooding or poor drainage; along the Dodder but also under the Luas bridge in Ranelagh village and the park areas, Ranelagh Gardens (left of the pond), Herbert Park (near the parking).
- Q.82 Councillor Hazel Chu**
To ask the Manager in light of recent antisocial behaviour of the new playground at Sean Moore Park for specific signs to be put up that the playground is for children under a specific age. With regards to this I would also ask the Manager to work with the local Gardaí to prevent vandalism of the playground which has already occurred. Myself and local residents have already been in touch with the Gardaí but it would be great if the council being custodians of the park could perhaps write to them too.
- Q.83 Councillor Hazel Chu**
To ask the Manager for a pedestrian light crossing at the junction of Chelmsford Avenue and Ranelagh Road (where Brown Sugar and Ranelagh Dentals are located) and for a crossing at Grove Road across Rathmines Road.
- Q.84 Councillor Hazel Chu**
To ask the Manager for an update on cycling protection on Camden Street as per my request at the previous meeting.
- Q.85 Councillor Hazel Chu**
To ask the Manager on the viability of 24 hour cycle lanes across the South East Area.
- Q.86 Councillor Hazel Chu**
To ask the Manager on putting flower planters across 30km residential zones to slow down traffic.
- Q.87 Councillor Danny Byrne**
To ask the Manager to investigate the possibility of having bottle banks situated around Pearse Square / Pearse Street / Grand Canal Dock as the nearest bottle banks are in Ringsend - not a practical distance and one which most people would have to drive to. Given the significant increase in population in Grand Canal Dock in particular surely this is not an unreasonable request.

Q.88 Councillor Danny Byrne

To investigate the possibility of having bottle banks in Fitzwilliam Square or environs, the nearest bottle banks are in Ringsend - not a practical distance and one which most people would have to drive to.

Q.89 Councillor Danny Byrne

To ask the Manager further to my question (Q.73 September South East Area Committee meeting) when this unit (Jenny's Hair Studio in Ringsend) will be ready for occupation. Further to this, how long has it been empty and why has it been left empty for so long given the acute housing crisis?

Q.90 Councillor Danny Byrne

To ask the Manager to fix a portion of the footpath on Havelock Square which has collapsed due to traffic mounting the footpath - a further request to erect steel bollards, strategically placed to prevent mounting of the footpath and parking thereon.

Q.91 Councillor Danny Byrne

To ask the Manager if the memorial statue to Admiral William Browne be attended to / cleaned are there have been stickers etc. stuck on it defacing it.

Q.92 Councillor Danny Byrne

To ask the Manager if the street at *details supplied can be repaired. During the building of a number of houses there the street has been left in a very poor and dangerous condition.

Q.93 Councillor Danny Byrne

To ask the Manager to engage with the Aviva Stadium to ensure that the area cleaned post matches and events is extended beyond its current reach. Residents on Grand Canal Street and further report their gardens being used as skips. Perhaps extra bins out on these days may help.

